



Follow these instructions to update your EA SPORTS™ MADDEN NFL™ FOOTBALL cabinet with Version 1.5.1 Game Software, which includes the 2005-2006 Roster Update.

Kit Contents

- Two Game Install Disks (Part #: 050-0081-01)
- Roster Update Sign with Double-Sided Mounting Tape
- Emergency Recovery Disk (Part #: 050-0057-01)
- Marketing Letter with More Information
- This Instruction Document
- Cabinet Registration Instructions

You will also need the cabinet serial number, plus your activated Operator card **or** a 4-digit registration key obtained from the GLOBAL VR® website (www.globalvr.com) to register or re-register your cabinet.

Update the Software

Important: Throw away all previous Madden Game Install Disks. Keep only the '05-'06 Roster Update/Software Version 1.5.1 Game Disks (Part #: 050-0081-01). Keep your existing Emergency Recovery Disk (Part #: 050-0053-01 or 050-0057-01). A spare Emergency Recovery Disk is included with this update kit for your convenience.

Restore the Operating System

This process takes about 10 minutes.

1. Open the CD drive, insert the CD labeled **Emergency Recovery Disk**, and power the cabinet OFF and then ON. The computer will reboot from the CD. You will see a series of processing screens on the monitor.
2. After about 5 minutes, you will be prompted to remove the CD and turn the cabinet OFF and then ON.

11/15/2005

040-0096-01 Rev. B © 2005 GLOBAL VR, INC.

3. When the computer reboots, you may see a blank screen for 10-15 seconds, followed by a series of processing screens. After a few minutes, the system will reboot, and you will be prompted to insert Game Disk 1.

Install the Game Software

This process takes about 20 minutes.

1. Open the CD drive and insert the CD labeled **Game Install Disk 1 of 2**. The computer will read the CD automatically (do not reboot). You will see a series of screens.

Note: If nothing happens, make sure you inserted the correct disk. Re-open and close the CD drive.

2. After 5-10 minutes, the CD drive will open and you will be prompted to insert Disk 2. Insert the CD labeled **Game Install Disk 2 of 2**. The computer will read the CD automatically (do not reboot). You will see a series of screens and then the system will reboot.

Note: You may see a blank screen for up to 2 minutes while the system reboots.

3. After the system reboots and the game starts, remove the disk from the CD drive.
4. Verify **Madden: 1.5.1** is displayed in the lower left-hand corner of the Operator Menu screen.

Complete the Update and Register the Cabinet

1. Connect the phone line or broadband network cable to the back of the cabinet.
2. Press the Operator button and select the Registration screen. You will see one of the following messages:
 - **Register Cabinet:** You should see this message even if your cabinet was previously registered. This is because GLOBAL VR[®] servers sent an unregister signal to all online cabinets as part of the Madden system update process.
 - **Cabinet needs Recovery:** You will see this message only when a registered cabinet has not synced with the GLOBAL VR[®] servers to receive the unregister signal.
3. If you see the **Cabinet needs Recovery** message, perform the following steps:
 - a. Select **Recover Registration Now** and press the red button.
 - b. On the confirmation screen, select **Yes, Recover Cabinet Now**, and press the red button.
 - c. On the next screen you can select phone or broadband. Select **Continue** and press the red button. You will see **Connecting...** and **In Progress** messages as the cabinet syncs with GLOBAL VR[®].
 - d. Once the cabinet has synced, you will see the message: **This cabinet has not been registered yet (4010)**. Press any button to continue.
 - e. When you see the message: **Start Registration Recovery Now?** Select **No, Return to Menu**. You will need to follow the normal registration steps to re-register the cabinet.
4. Refer to the Cabinet Registration Procedure, included in the update kit, to register your cabinet using your activated Operator card or a 4-digit registration key obtained from www.globalvr.com. If your cabinet was previously registered, you will be able to select your location from the list.

Install the Roster Update Sign

1. The Roster Update Sign can be placed on either side of the cabinet, as shown below. Determine the best position for the sign, and then fold the edge of the sign along the crease in the appropriate direction.
2. Peel the protective backing from one side of the strip of double-sided tape and place it on the edge of the sign.
3. Use the tape to adhere the sign on the cabinet as shown below.

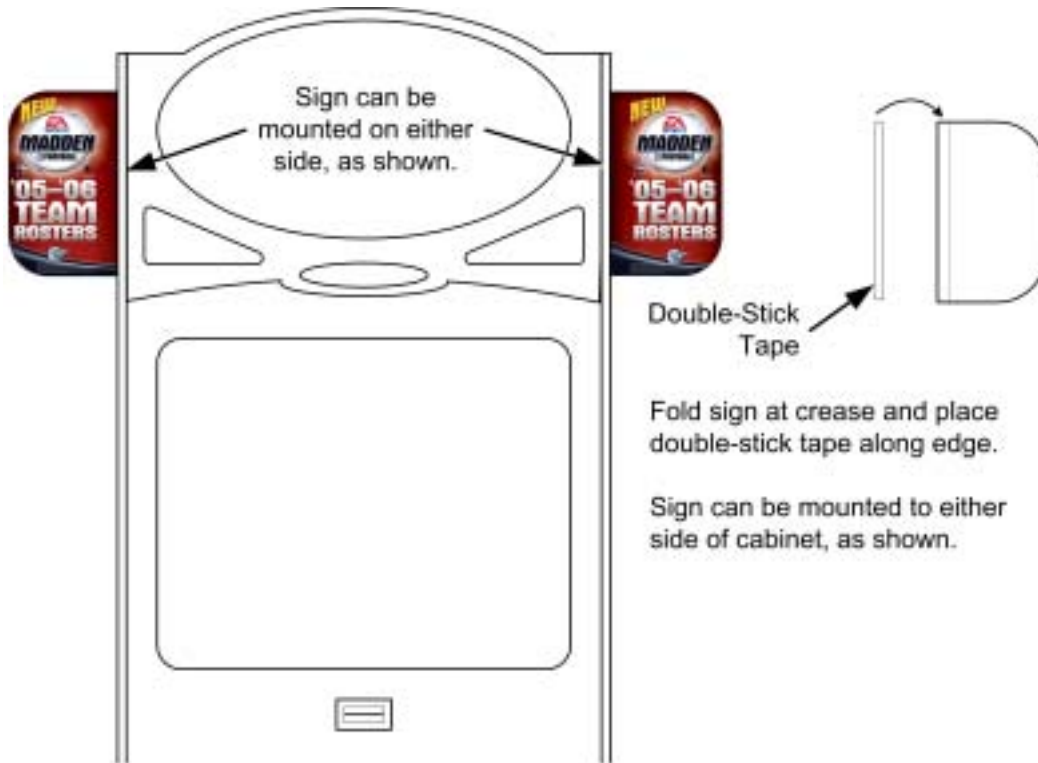


Figure 1. Roster Update Sign Installation