



Priority Level: Medium — Recommended Action		
Attention:	All Service Personnel	Bulletin: SB-044 Date: 12/1/2008
Products:	EA SPORTS™ NASCAR Racing, Motion Platform Only	
Issue:	Weld points in seat pedestal can loosen and cause damage to pedestal.	

Symptom: The weld points in the seat pedestals can become loose after extensive play. This can lead to the seat wobbling and eventually damaging the pedestal. This issue affects units shipped through November 2008.

Solution: Perform the steps below to inspect the seat pedestal for damage and install four bolts to reinforce the pedestal.

If you have any questions or concerns, please contact GLOBAL VR Service.

Disassemble the Seat

Refer to Figure 1 to disassemble the seat as described below.

1. Remove the twelve (12) hex bolts from around the bottom of the pedestal cover.
2. Remove the retaining screws that secure the top of the bellows on the left side of the motion base and lower the bellows on the left side.
3. Cut the tie wrap that anchors the speaker wires and disconnect the 9-pin speaker harness connector from the main harness.
4. Carefully lift the seat assembly and make sure all wires are free and will not get caught or pulled.
5. Remove the four (4) nuts and flat washers from inside the pedestal cover, and remove the pedestal cover from the seat assembly. Be careful not to lose the four (4) plastic spacers below the slide assembly. Note the placement of each component for reassembly.

Inspect the Pedestal

Inspect the pedestal for signs of metal fatigue. **If there is visible warping, cracking or fracturing, you must replace the pedestal (Part # 37303-00).**

Install the Bolts

Refer to Figure 2 to drill holes and install the four (4) bolts with washers and nuts.

1. Drill four (4) 1/4" holes 7/16 to 1/2" from the edge of the pedestal, in line with the existing holes used for mounting the seat, as shown in the last part of Figure 2.

- Install the ¼-20 bolts from the top of the pedestal. Install the flat washer and Nylock nut on the inside of the pedestal. Tighten the nut securely.

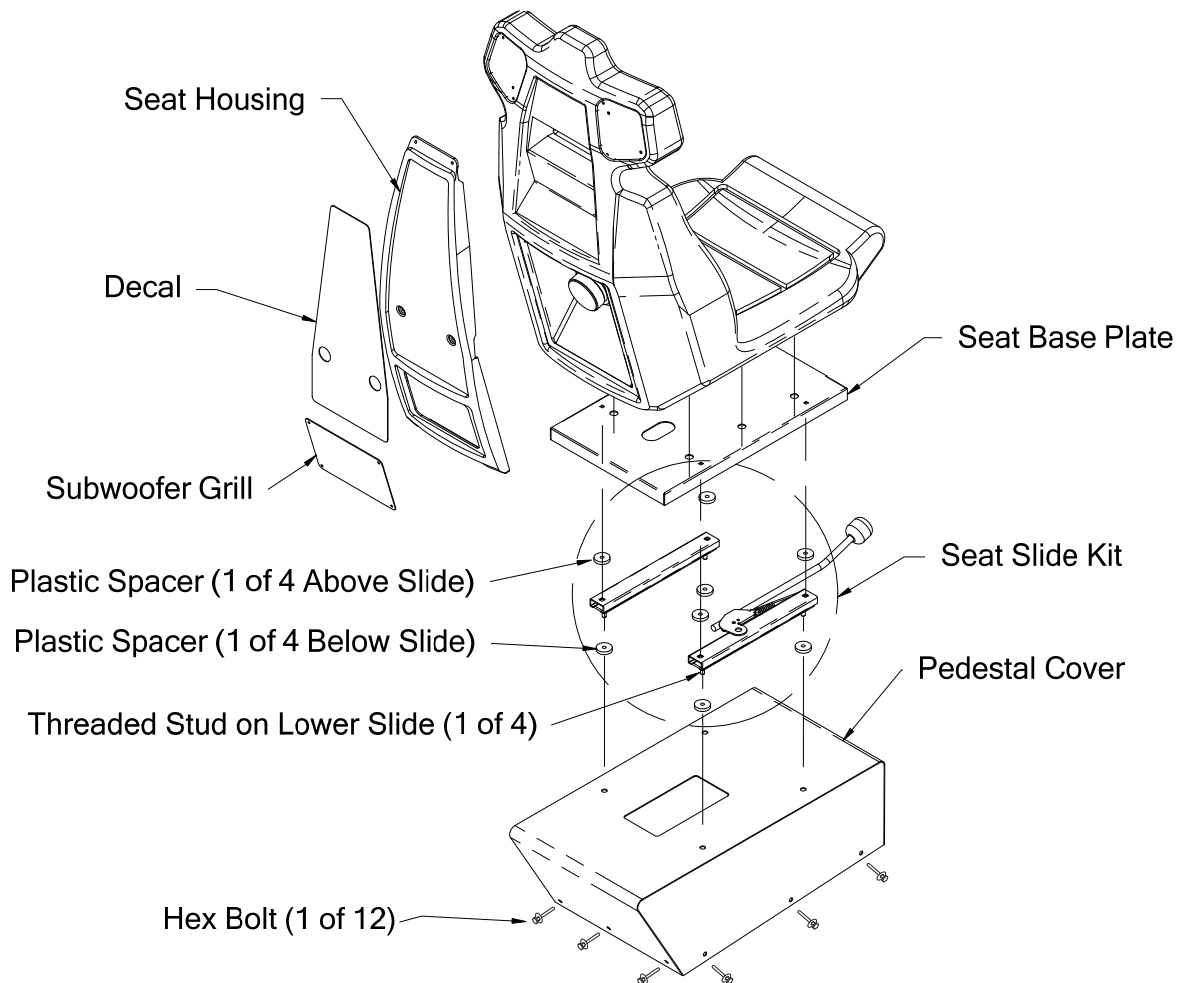


Figure 1. *Seat Assembly Exploded View*

Reassemble the Seat

Note: When reassembling the seat, be sure to re-install the four (4) plastic spacers between the slide assembly and the pedestal. A missing spacer will cause the seat to wobble and may cause damage. If necessary, flat washers stacked to equal the thickness of the spacer can be used to replace a lost spacer.

- Install the seat assembly with the four spacers and secure with the nuts and flat washers removed previously. Use the following specs when tightening the nuts to prevent the seat from gradually becoming loose due to motion during gameplay:
 - Seat Base Plate to Slide Assembly: Either replace the ¼-20 flange nuts with ¼ Nylock nuts, or apply Loctite 242[®] Threadlocker Blue (or a comparable product) to the threads. Tighten the nuts to 4–6 ft lbs (48–72 in lbs).
 - Pedestal Cover to Slide Assembly: Either replace the 5/16-18 flange nuts with 5/16 Nylock nuts, or apply Loctite 242 Threadlocker Blue (or a comparable product) to the threads. Tighten the nuts to 9–12 ft lbs (108–144 in lbs).

Important: Loctite can damage plastics. Be careful not to get the Loctite on the plastic seat, and **do not** use Loctite with Nylock nuts.

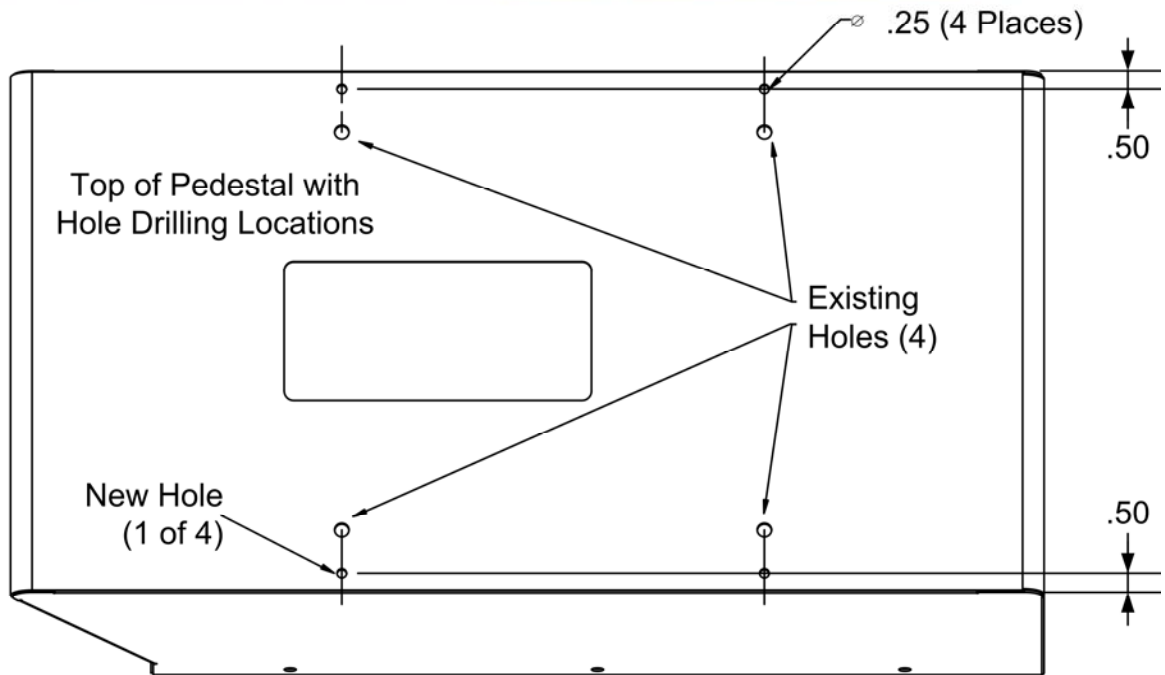
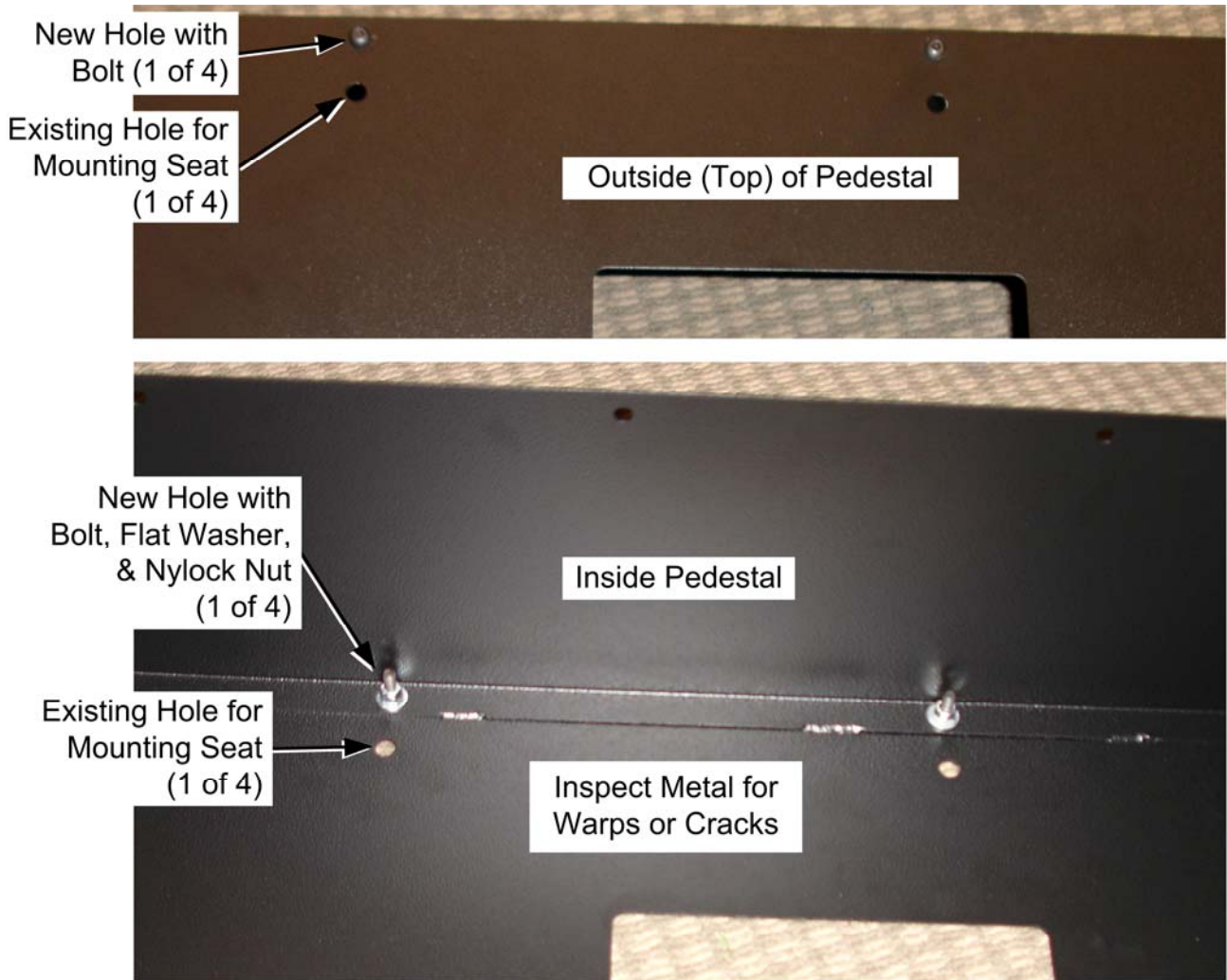


Figure 2. Installing the Bolts