

Setting the Computer BIOS (CMOS)

The computers for Carbon dedicated cabinets are being built with both Asus and Gigabyte motherboards. The BIOS settings are different for the two systems. To determine which motherboard is in your computer, check the audio ports on the computer rear panel. The Asus has four audio ports, and the Gigabyte has six audio ports. You can also start the CMOS Setup Utility and see whether your screens look like the Gigabyte screens in the next section, or the Asus screens in the section starting on page 4.

If your system has a different motherboard, check <http://service.globalvr.com> for updated information.

BIOS Setup for Gigabyte GA-G31MX-S2 Motherboard

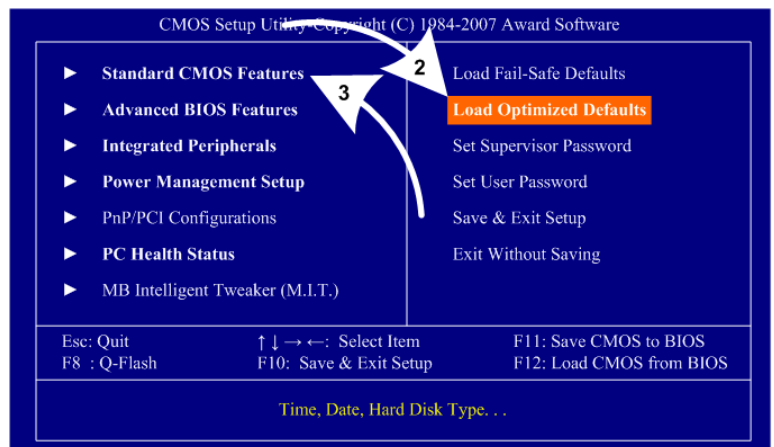
If you are comfortable using the CMOS Setup Utility, connect a keyboard to the computer and press the **DEL** key during boot to run the Utility, select **Load Optimized Defaults** from the Main Menu, and then change the settings shown in the table below. For more help, refer to the detailed instructions that follow.

Menu	Item	Setting
Standard CMOS Features	Drive A	None
	Halt On	No Errors
Advanced BIOS Features	First Boot Device	CDROM
	Second Boot Device	Hard Disk
	Third Boot Device	Disabled
Integrated Peripherals	USB Keyboard Support	Enabled
	USB Mouse Support	Enabled
Power Management Setup	AC Back Function	Full On
PC Health Status	CPU Smart FAN Control	Disabled

Important: Your screens may not look exactly like the screens shown in this document, and some settings shown on the screens pictures may be different from your system.

Do not change any settings that are not specifically described in this document.

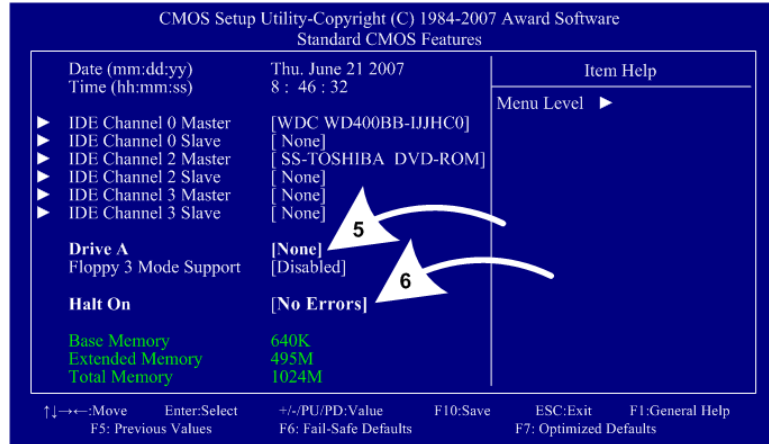
1. Power off the computer and connect a keyboard to the computer. Power on and press the **DEL** key during boot. The CMOS Setup Utility Main Menu will appear:
2. Use the Arrow keys (↑↓→←) to select **Load Optimized Defaults**, and press **Enter**. Press **Y** and **Enter** when prompted to confirm the change.
3. Use the Arrow keys to highlight **Standard CMOS Features**, and then press **Enter**.



BIOS Setup for Carbon Dedicated Cabinets

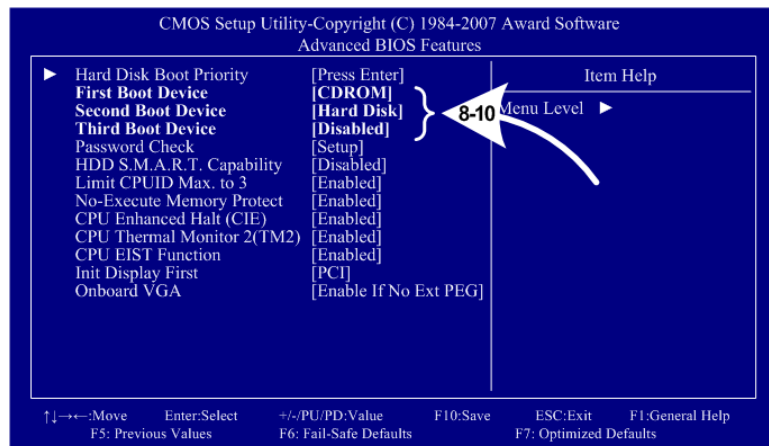
- A screen similar to the following will appear:
- Use the Arrow keys to highlight the setting for **Drive A** and press **Enter**. Use the **Page Up** and **Page Down** keys to change the setting to **None**.
- Change the setting for **Halt On** to **No Errors** the same way.

Press **ESC** to go back to the Main Menu.



- Now use the Arrow keys to highlight **Advanced BIOS Features** and press **Enter**. A screen similar to the following will appear:
- Use the Arrow keys to highlight the setting for **First Boot Device** and press **Enter**. Use the **Page Up** and **Page Down** keys to change the setting to **DVDROM**.
- Change the setting for **Second Boot Device** to **Hard Disk** the same way.
- Change the setting for **Third Boot Device** to **Disabled** the same way.

Press **ESC** to go back to the Main Menu.

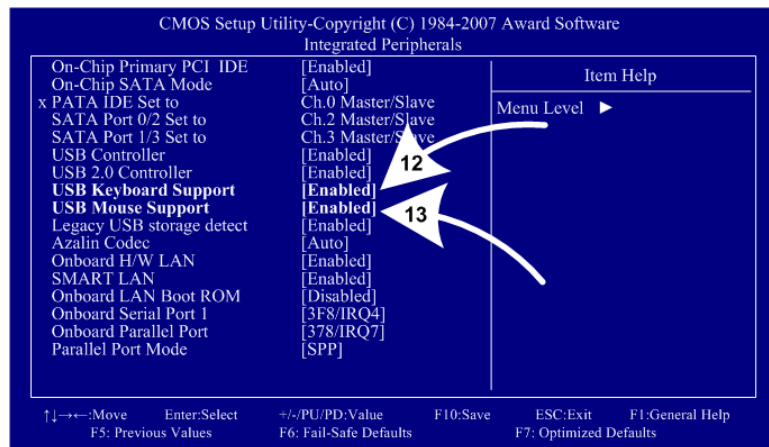


- Now use the Arrow keys to highlight **Integrated Peripherals** and press **Enter**.

A screen similar to the following will appear:

- Use the Arrow keys to highlight the setting for **USB Keyboard Support** and press **Enter**. Use the **Page Up** and **Page Down** keys to change the setting to **Enabled**.
- Use the Arrow keys to highlight the setting for **USB Mouse Support** and press **Enter**. Use the **Page Up** and **Page Down** keys to change the setting to **Enabled**.

Press **ESC** to go back to the Main Menu.



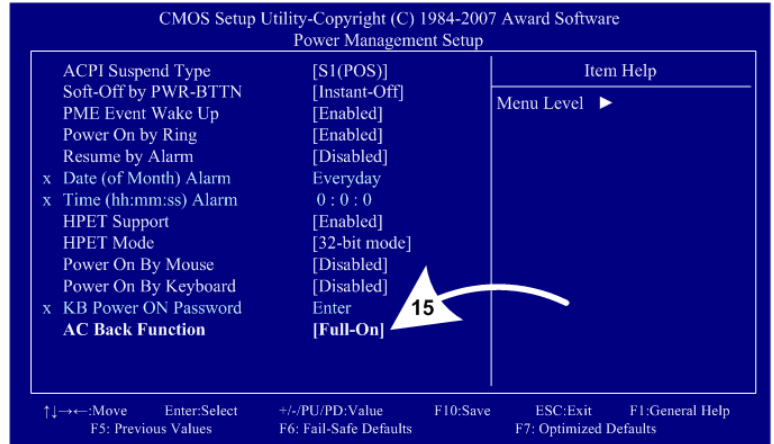
14. Now use the Arrow keys to highlight **Power Management Setup** and press **Enter**.

A screen similar to the following will appear:

15. Use the Arrow keys to highlight the setting for **AC Back Function** and press **Enter**.

Use the **Page Up** and **Page Down** keys to change the setting to **Full-On**.

Press **ESC** to go back to the Main Menu.



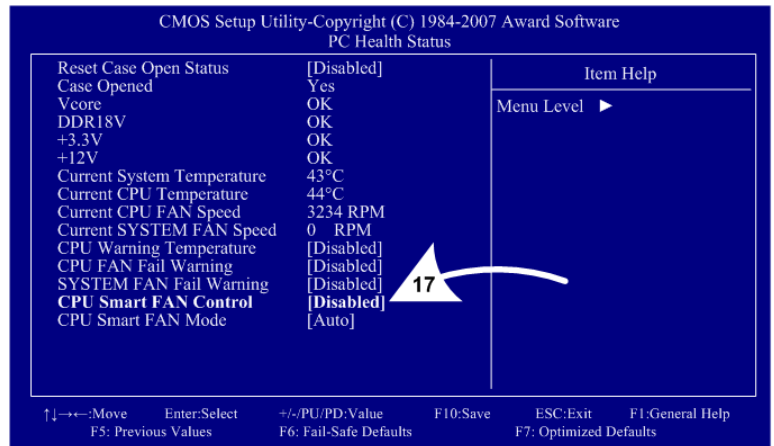
16. Now use the Arrow keys to highlight **PC Health Status** and press **Enter**.

A screen similar to the following will appear:

17. Use the Arrow keys to highlight the setting for **CPU Smart FAN Control** and press **Enter**.

Use the **Page Up** and **Page Down** keys to change the setting to **Disabled**.

Press **ESC** to go back to the Main Menu.



18. Now that all settings are correct, press F10. The following prompt will appear:

Save to CMOS and EXIT (Y/N) Y

19. Make sure "Y" shows at the end of the prompt (use the arrow keys to select, if necessary), and press **Enter** to save the settings and exit.

BIOS Setup for Asus P5N-MX Motherboard

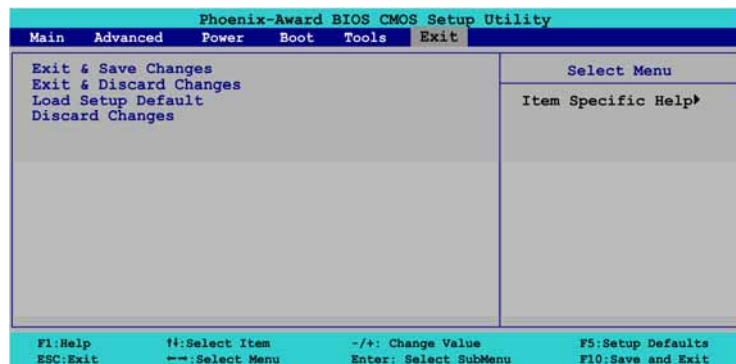
If you are comfortable using the CMOS Setup Utility, connect a keyboard to the computer and press the **DEL** key during boot to run the Utility. Select **Load Setup Default** from the **Exit** Menu first, and then check all of the settings shown in the table below. For more help, refer to the detailed instructions that follow.

Menu	Submenu (if applicable)	Item	Setting
Exit		Load Setup Default	<i>(Not applicable)</i>
Main		Legacy Diskette A:	Disabled
		Primary IDE Master	WDC WD400BB
		Primary IDE Slave	Sony DVD-ROM
Boot	Boot Device Priority	1st Boot Device	CDROM
		2nd Boot Device	Hard Disk
		3rd Boot Device	Disabled
		4th Boot Device	Disabled
	Boot Settings Configuration	Halt On	No Errors
Power	APM Configuration	Restore on AC Power Loss	Power On
	Hardware Monitor	Q-FAN Function	Disabled

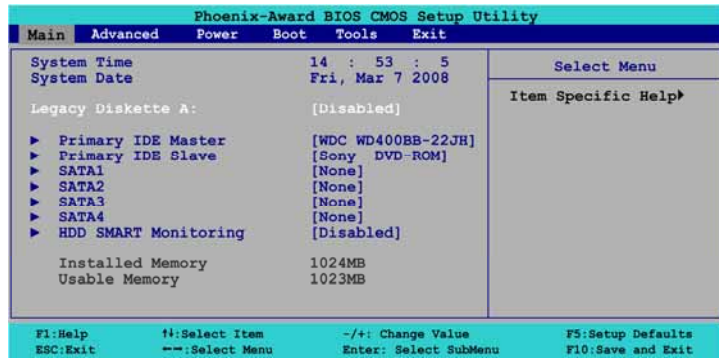
Important: Your screens may not look exactly like the screens shown in this document, and some settings shown on the screens pictures may be different from your system.

Do not change any settings that are not specifically described in this document.

1. Power off the game and connect a keyboard to the computer. Power on and press the **DEL** key during boot. The CMOS Setup Utility will start:
2. Use the Arrow keys (**← →**) to highlight **Exit** from the top of the screen, and the **Exit** menu will appear.
3. Use the Arrow keys (**↑↓**) to select **Load Setup Default**, and press **Enter**.
4. A prompt will appear saying **Load Setup Defaults (Y/N)?** Make sure **YES** is highlighted and press **Enter** to confirm the change.

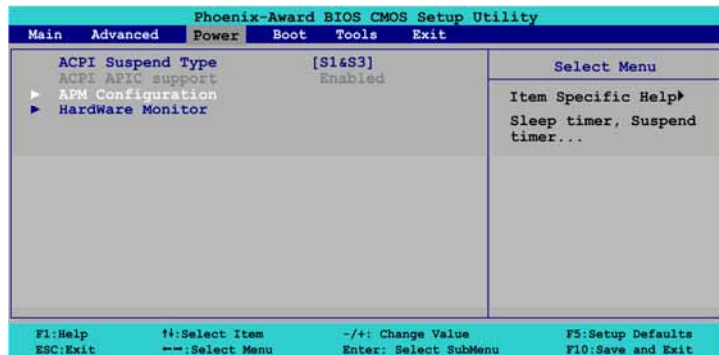


5. Use the Arrow keys (← →) to highlight **Main** from the top of the screen, and the **Main** Menu will appear.
6. Use the Arrow keys (↑↓) to highlight **Legacy Diskette A:** and then use the + and – keys to change the setting to **Disabled**.
7. Verify **Primary IDE Master** is the hard disk (WDC WD400BB) and **Primary IDE Slave** is the DVD-ROM.

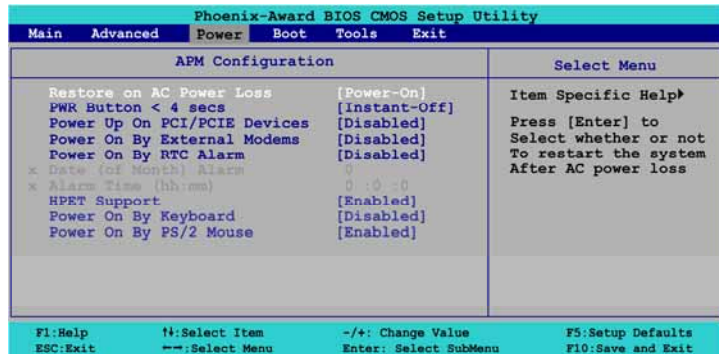


8. Use the Arrow keys (← →) to highlight **Power** from the top of the screen, and the **Power** menu will appear.
9. Use the Arrow keys to highlight **APM Configuration** and press **Enter**.

The **APM Configuration** menu will appear.



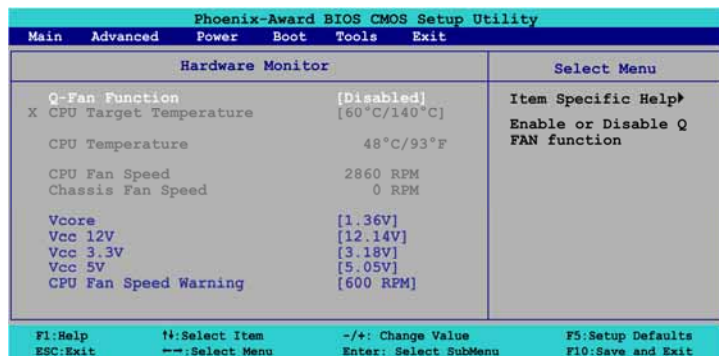
10. Use the Arrow keys (↑↓) to highlight **Restore on AC Power Loss** and then use the + and – keys to change the setting to **Power-On**.
11. Press **Esc** to return to the **Power** menu.



12. Use the Arrow keys to highlight **Hardware Monitor** and press **Enter**.

The **APM Configuration** menu will appear.

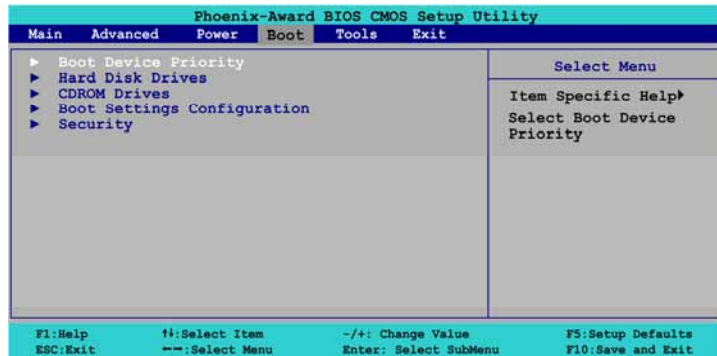
13. Use the Arrow keys (↑↓) to highlight **Q-Fan Function** and then use the + and – keys to change the setting to **Disabled**.



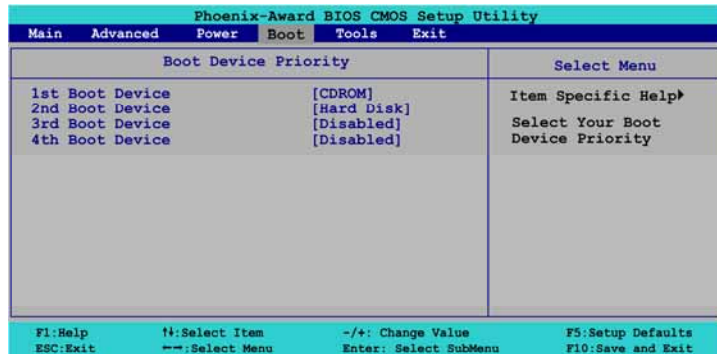
BIOS Setup for Carbon Dedicated Cabinets

14. Use the Arrow keys (← →) to highlight **Boot** from the top of the screen, and the **Boot** menu will appear.
15. Use the Arrow keys (↑↓) to highlight **Boot Device Priority** and press **Enter**.

The **Boot Device Priority** menu will appear.



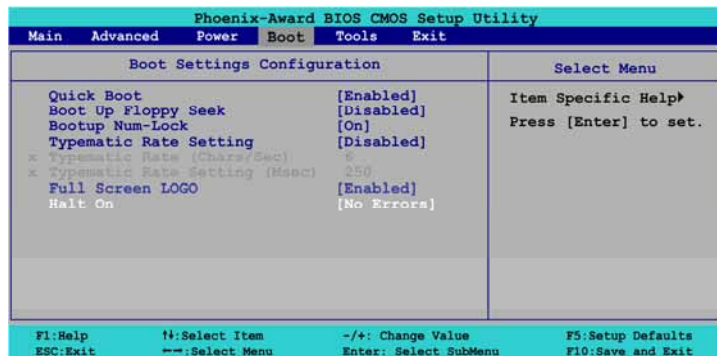
16. Use the Arrow keys (↑↓) to highlight **1st Boot Device**, and then use the + and – keys to change the setting to **CDROM**.
17. Do the same step to change **2nd Boot Device** to **Hard Disk**, and **3rd** and **4th Boot Device** to Disabled, as necessary.
18. Press **Esc** to return to the **Boot** menu.



19. Use the Arrow keys (↑↓) to highlight **Boot Settings Configuration** and press **Enter**.

The **Boot Settings Configuration** menu will appear

20. Use the Arrow keys (↑↓) to highlight **Halt On** and then use the + and – keys to change the setting to **No Errors**.
21. Press **Esc** to return to the **Boot** menu.



22. Now that all settings are correct, press F10. The following prompt will appear:

Save configuration changes and exit now? [YES] NO

23. Make sure **YES** is highlighted (use the arrow keys ← → to select, if necessary), and press **Enter** to save the settings and reboot the computer.