

Installing a Jaton Video Card in VORTEK™




Document Part #: 040-0117-01

GLOBAL VR® is now shipping the Jaton 3DForce2 MX-64DDR video card as a replacement part for use in VORTEK cabinets. This video card requires drivers that are supplied on the **Invasion Earth** Game Software CD, or a separate VORTEK video driver CD. Follow the steps in this document to install the video card and drivers. Install video drivers **only** from disks supplied by GLOBAL VR.

Important: Only install GLOBAL VR approved video cards in GLOBAL VR games. The games will not run properly with other video cards.

Safety

Please read this page before beginning the service procedure.

| | |
|---|--|
|  | To avoid electrical shock, disconnect the AC power cord before beginning any service or installation procedures. |
|  | GLOBAL VR assumes no liability for any damages or injuries incurred while setting up or servicing the cabinet. Only qualified service personnel should perform installation or service procedures! |
|  | To prevent electrostatic discharge (ESD) damage, handle PCBs by the edges only and use a grounding wrist strap or similar precaution. |

Tools Required

- Medium (#2) Philips Screwdriver
- Grounding Wrist Strap (for ESD Protection)



Figure 1. Jaton 3DForce2 MX-64DDR Video Card

Determine your Computer Type

GLOBAL VR has used Graphite and DFI computers for the VORTEK system.

The pictures below show the general appearance of the connector panel of the DFI and Graphite Computers. The Graphite computer has the CD-ROM drive on the same side as the connectors. The DFI computer has the CD-ROM drive on the front panel and connectors on the back.

This document describes specific steps for a DFI computer. The procedure is similar for a Graphite Computer.

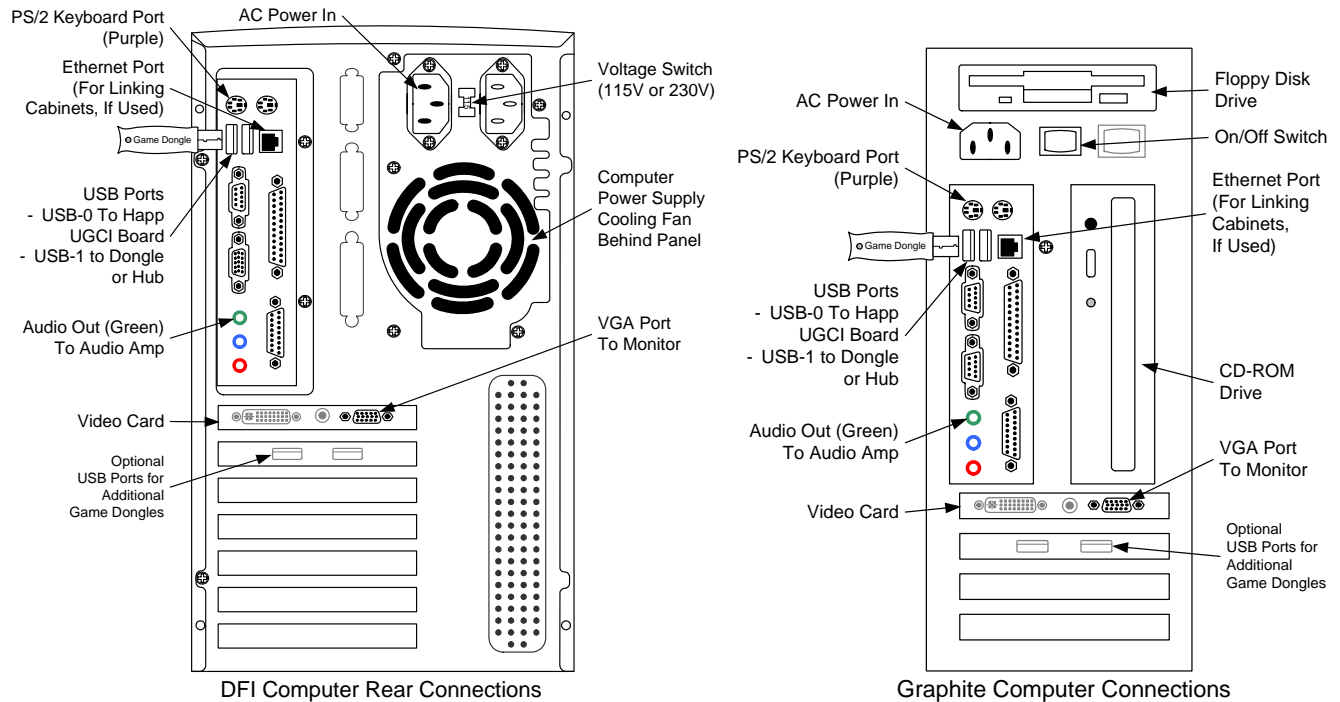


Figure 2. DFI and Graphite Computer Rear Panels

Video Card Replacement Procedure

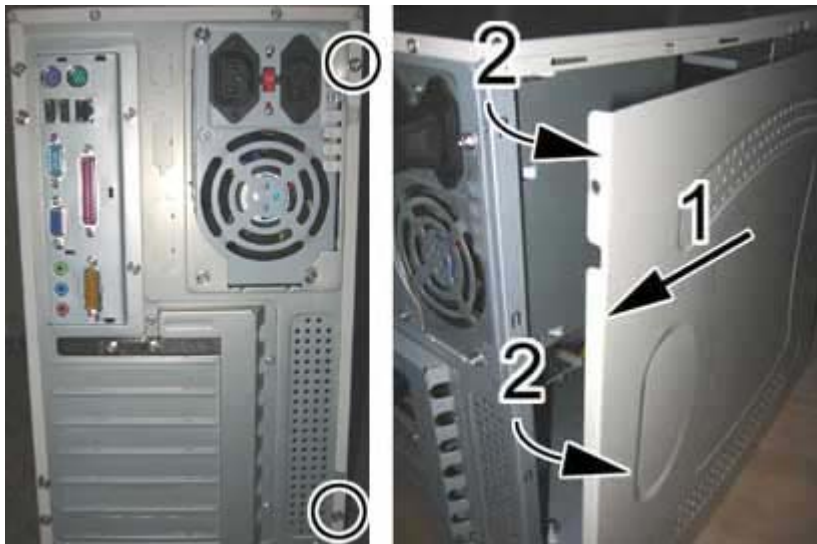
Note: The location and arrangement of the computer and hardware may vary, but the removal process is generally the same for all VORTEK cabinets.

1. Read this instruction document before beginning the procedure.
2. Turn the cabinet OFF and disconnect the AC power cord.
3. Remove the rear door from the cabinet.
4. Refer to Figure 2, and disconnect all of the cables from the computer. There should be four cables:
 - AC Power Cable from Power Strip
 - USB Cable from Happ UGCI board
 - Video Cable from Monitor
 - Audio Cable from Audio Amp
 - Ethernet Cable from Power Plate (Used for Linking Cabinets)

5. Your computer may be secured to the cabinet with brackets, or with a strap and buckle, as shown in the picture below. Loosen the strap, or remove the wood screws that secure the brackets to the cabinet, and carefully lift the computer out of the cabinet.



6. Remove the two screws holding the computer cover in place, as shown by the circles below. Slide the cover back 1/4 inch (1), and then pivot it outward (2), as shown in the picture below.



Installing a Jaton Video Card in VORTEK

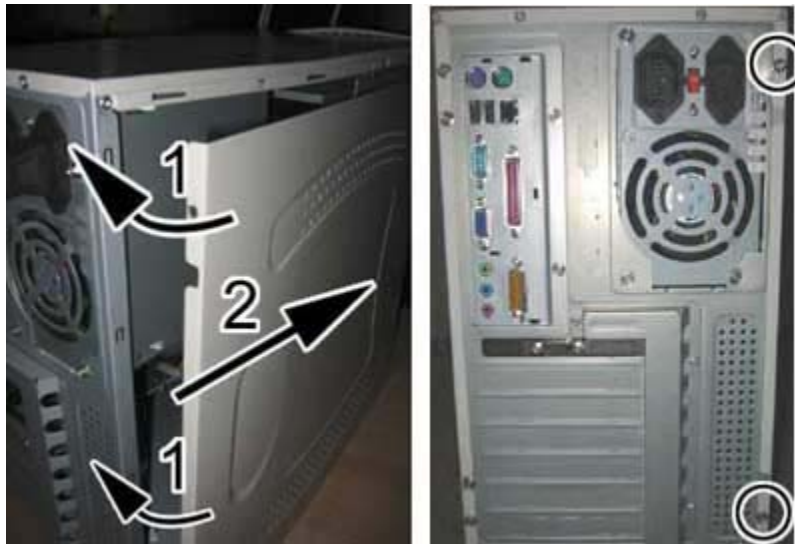
7. Locate the existing video card in the AGP slot in the computer.
8. Use a medium (#2) Philips screwdriver to remove the chassis screw that secures the video card, as shown by the arrow in the third part of the picture below.
9. Open the card lock at the end of the AGP slot, as shown in the picture below.
10. Remove the video card by pulling it straight out of the slot.
11. Insert the new video card into the AGP slot. Close the card lock and secure the chassis screw.



12. To confirm that the video card is installed correctly, make sure that there are no gold tabs showing just above the AGP slot, as shown in the picture below.



13. Re-install the computer cover by reversing the removal process, as shown in the picture below. You will need to align the teeth on the lid with the slots in the chassis to close the lid properly.



14. Reverse the removal steps to re-install the computer into the cabinet and re-connect the four cables to the computer. **Be sure to connect the video cable to the VGA port on the new video card, NOT to the motherboard VGA port located above the audio ports.**

Video Card Driver Installation

The Jaton video card requires drivers that are supplied on the **Invasion Earth** Game Software CD, or on a separate VORTEK video driver CD. Install video drivers **only** from disks supplied by GLOBAL VR.

1. Power on the game. When the computer boots, a Found New Hardware wizard will appear onscreen.
2. Insert the **Invasion Earth** Game Software CD (or separate VORTEK video driver CD). The wizard will install the drivers from the CD.
Note: The Invasion Earth game will **not** be installed at this time. To run this game, you must purchase the game kit that includes the correct game dongle.
3. Once the drivers are installed, you will see a dialog box with a **Finish** button. Remove the CD and reboot the game.
4. This completes the video card replacement.

Running the System Disk with the Jaton Card

If you need to restore the operating system with the System Disk on a system with a Jaton video card, you must follow the steps below to re-install the Jaton video drivers before installing the games. The Jaton video card requires drivers that are supplied on the **Invasion Earth** Game Software CD, or on a separate VORTEK video driver CD. Install video drivers **only** from disks supplied by GLOBAL VR.

1. Insert the **System Disk** in the CD-ROM drive and turn the computer OFF and then ON. The computer will boot from the CD. You will see the Hard-Drive Image process screens on the monitor.

Installing a Jaton Video Card in VORTEK

Note: If the computer does not boot from the CD (the game starts), connect a keyboard and do the following to make sure CDROM is set as the first boot device in the BIOS settings:

- With a Graphite computer, press **F2** during boot to enter the BIOS setup utility. Under the Boot tab, set CD-ROM to 1st Boot Device (or 2nd if Removable Dev is set as 1st).
 - With a DFI computer, press **Del** to during boot to enter the BIOS setup utility. Under the Advanced Bios Features tab, set CDROM to First Boot Device.
2. When the Hard-Drive Image process has finished, a Found New Hardware wizard will appear onscreen.
 3. Insert the **Invasion Earth** Game Software CD (or the separate VORTEK video driver CD). The wizard will install the drivers from the CD.
Note: The Invasion Earth game will **not** be installed at this time. To run this game, you must purchase the game kit that includes the correct game dongle.
 4. Once the drivers are installed, you will see a dialog box with a **Finish** button. Remove the CD and reboot the game.
 5. Install all games as usual.

Tech Support Information

Service & Parts



Hours: 7:00AM–5:00PM Pacific Time, Monday–Friday

Phone: 408.597.3435

Fax: 408.597.3437

E-mail: techsupport@globalvr.com

Website: <http://service.globalvr.com>

Free telephone, e-mail, and online support are provided for systems during the warranty period. GLOBAL VR Technical Support can help you troubleshoot problems and diagnose defective parts. We can also answer questions about service procedures or game operation.

When you contact Technical Support, please provide the information listed below, as applicable:

- Cabinet Serial Number: _____
- Software Version Number (from Operator Main Menu): _____
- Proof of Purchase information
- Your mailing address and telephone number
- A summary of the question or a detailed description of the problem
- Specific error message
- Date of latest install or upgrade
- Any changes made to the system
- For game-play issues, the game and number of players

To comment on this document, please e-mail: techpubs@globalvr.com