



Six Gun Select
Joshua OS Upgrade
Full Cable Conversion

040-1102-01 Rev. C



www.globalvr.com
techsupport@globalvr.com
1-408-597-3400



Safety



The following safety instructions apply to all game operators and service personnel. Specific warnings and cautions will be found throughout this manual.

Please read this page before preparing your arcade cabinet for game play.

Use the following safety guidelines to help protect the system from potential damage and to ensure your personal safety.

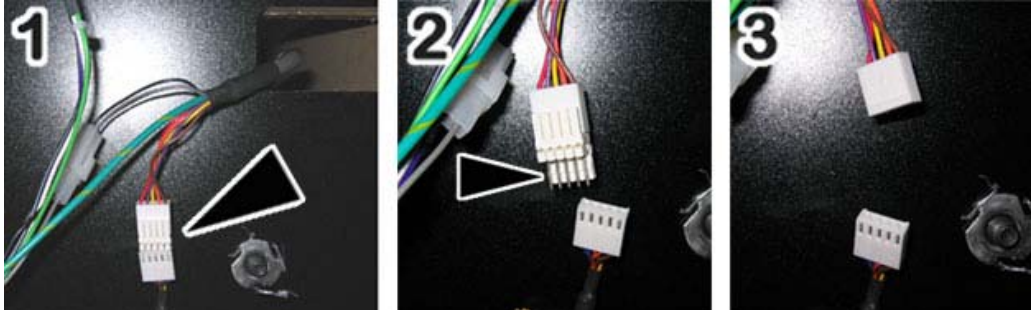
- To help avoid damage to the computer, the power supply on the computer automatically detects the voltage to match the AC power available at the location:
- 115 volts / 60Hz in most of North and South America and some Far Eastern countries such as Japan, South Korea and Taiwan
- 230 volts / 50Hz in most of Europe, the Middle East and the Far East
- To help prevent electric shock, plug the system into a properly grounded power source. These cables are equipped with 3-prong plugs to help ensure proper grounding. Do not use adapter plugs or remove the grounding prong from a cable. If you must use an extension cable, use a 3 wire cable with properly grounded plugs.
- To help protect your system from sudden increases and decreases in electrical power, use a surge suppressor, line conditioner or Uninterruptible Power Supply (UPS).
- Be sure nothing rests on the system's cables and that the cables are not located where they can be stepped on or tripped over.
- Do not spill food or liquid on the cabinet.
- Do not push any objects into the openings of the system. Doing so can cause fire or electric shock by shorting out interior components.
- Keep your computer far away from radiator and other heat sources.
- Do not block cooling vents.

Warnings

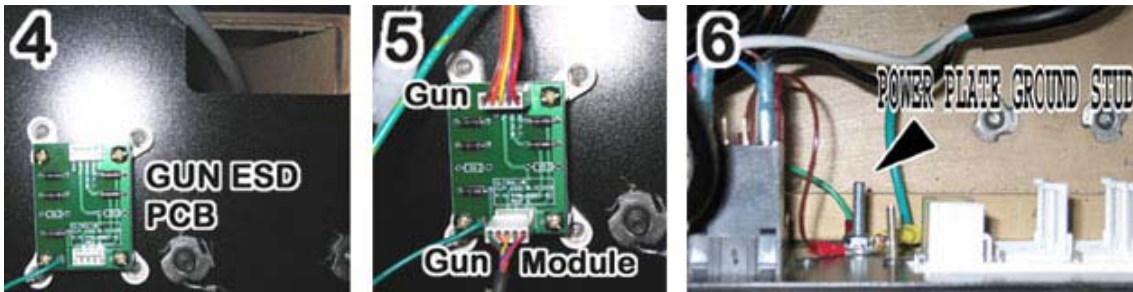
 CAUTION	To avoid electrical shock, unplug the cabinet before performing the installation procedures.
 STOP	Global VR assumes no liability for any damages or injuries incurred while setting up the EA Sports™ PGA Tour® Golf cabinet. Only qualified service personnel should perform this installation!

Installing Gun ESD Protection

To protect the Gun and Gun Module from electrical shock you will need to install the Gun ESD PCB into your cabinet. Follow the instructions below.



1. Make sure the cabinet is powered down and the AC unplugged from the wall outlet.
2. Locate the 5-pin Molex connector that connects the gun harness to the gun module.
3. Unplug the Molex connectors. Remove the male joiner pins as shown by the arrow in Part 2 and 3 of the picture above



4. Install the ESD PCB next to the gun harness. Use wood screws to attach the PCB to the cabinet. The green ground wire on the PCB should point down. See Part 4 of the picture above. The gun harness should be able to reach the ESD PCB.
5. Plug the gun harness connector into the top of the ESD PCB. See Part 5 of the picture above. Plug the gun module connector into the bottom of the ESD PCB.
6. Connect the grounding wire from the ESD PCB to the ground stud on the AC Power plate at the rear of the cabinet. See part 6 of the picture above. This is a critical part of the ESD protection.

Installing Six Gun Select Cabinet Artwork

Replace the old Last Bounty Hunter artwork with the new Six Gun Select artwork included with your kit. The new artwork installs over the old artwork to make this process as simple as possible.



1. Use the marquee to align the bottom edge of the new artwork and apply as shown in the picture above. If the new artwork hangs over the edge of the marquee, use a razor blade to trim the excess. See Item 1 in the picture above.
2. Apply the new console artwork between the two speakers on the front of the cabinet. Ensure the new console artwork completely covers the old artwork. See Item 2 in the picture above.
3. Apply the new side art graphics on both sides of the cabinet. Use the top corner of the Six Gun Select logo to align the new artwork on the cabinet. Ensure the new artwork completely covers the old artwork. See Item 3 in the picture above.
4. Apply the game logo sub-console artwork across the front of the cabinet just below the speakers. See Item 4 in the picture above. This artwork shows players the available games. Each new game you purchase comes with a small sticker that is placed on this area.

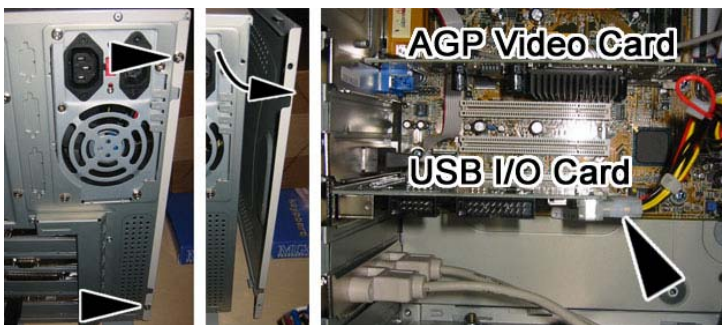


Upgrading Computer and Cabinet Hardware

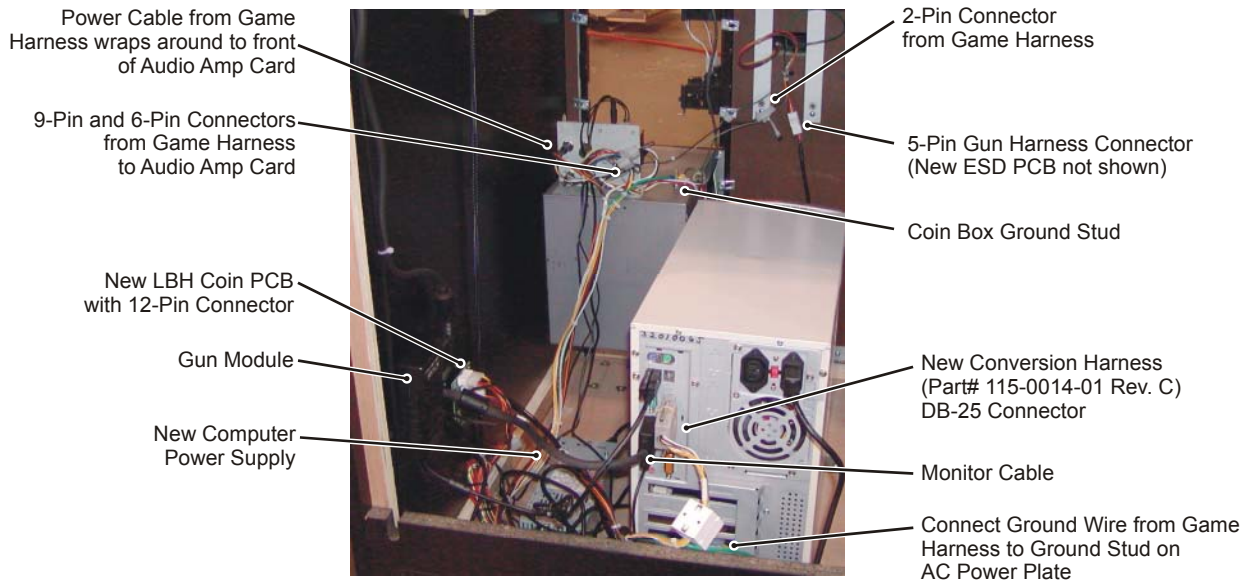
1. Make sure the cabinet is powered down and the AC unplugged from the wall outlet before you begin the hardware upgrade.
2. Unplug the video cable, USB I/O cable, and DB-37 connector from the back of the computer as shown by the arrows in the following picture. Plug the video cable into the 15-pin monitor port on the computer.



3. The DB-37 connector is one end of the game harness. The entire game harness must be removed from the cabinet. Perform these steps to remove the old game harness:
 - Cut the tie-wraps holding the harness in place.
 - Unplug the 9-pin connector from the audio Amp card.
 - Unplug the 6-pin connector from the audio Amp card.
 - Unplug the power cable that wraps around to the front of the audio Amp card.
 - Unplug the 2-pin connector (the adjacent 3-pin connector is unconnected).
 - Remove the harness from the cabinet.
4. Remove the two screws holding the side panel onto the computer. Slide the computer side panel back first then out to unlock the panel from the computer case.



5. Remove the AGP video card.
6. Unplug the power cable from the USB I/O card, and remove the USB I/O card. Return the video card and USB I/O card to receive credit towards the Joshua Upgrade kit.
7. Re-install the computer side panel onto the computer chassis.
8. Install the LBH Coin PCB on the cabinet side wall using (4) 1" wood screws. See the following picture.



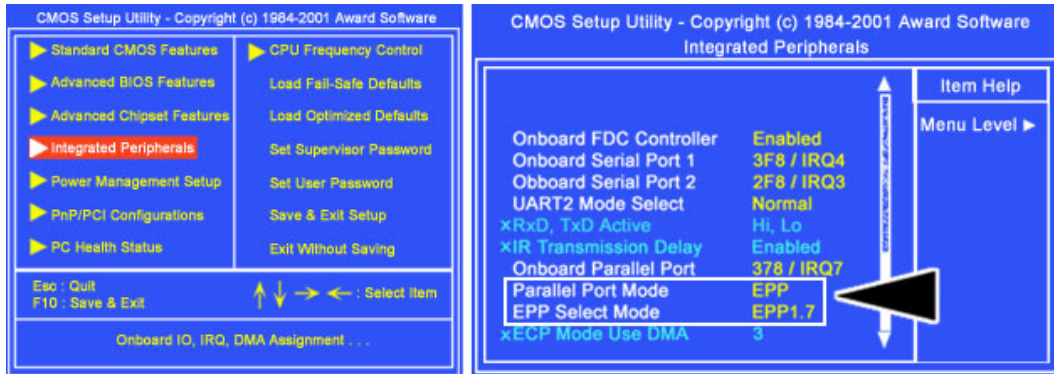
9. Install the computer power supply on the cabinet floor next to the computer and LBH Coin PCB using the velcro provided in the kit.
10. Connect the 4-pin power cable from the power supply you just installed to the LBH Coin PCB.
11. Install the new conversion harness (Part# 115-0014-01 Rev. C) using the following steps. Refer to the photo above:
 - Plug the DB-25 connector on the harness into the computer parallel port.
 - Connect the first ground wire on the harness to the AC power plate ground stud.
 - Plug the 12-pin connector on the harness into the new LBH coin PCB.
 - Plug the 9-pin connector on the harness into the 9-pin connector on the audio Amp card.
 - Plug the 6-pin connector on the harness into the 6-pin connector on the audio Amp card.
 - Plug the 2-pin connector on the harness into the button harness (next to the gun harness).
 - Connect the power cable on the harness to the front of the audio Amp card.
 - Connect the second ground wire on the harness to the coin box ground stud.
12. Use tie-wraps to secure the new cable harness in place.



Changing Computer BIOS Settings

After completing the hardware upgrade, you must verify that the parallel port setting in the computer BIOS is correct. This will ensure proper operation of the coin inputs and operator buttons.

1. Power to the computer must be OFF. Plug the PS/2 Keyboard into the purple-colored PS/2 port on the back of the computer.
2. Power the computer ON. Hit the *Delete* key on the keyboard when you see the first boot-up screen showing the CPU speed and memory. This will start the BIOS Setup Menu. See the following picture.



3. Use the arrows keys to scroll down and highlight **Integrated Peripherals**. Press the *Enter* button to enter this menu.
4. At the Integrated Peripherals Menu screen use the arrow keys to scroll down the long list of available options until you find **Parallel Port Mode** and **EPP Select Mode**. Use the *Page Up* and *Page Down* keys next to the number pad to scroll through and change each option.
5. **Parallel Port Mode** must be set to **EPP** and **EPP Select Mode** must be set to **EPP 1.7**. After changing these values, press the F10 Key to exit setup and save settings.
6. You may now unplug the keyboard from the computer and load the new software.

Upgrading the Software

Use the following procedure to install the software upgrade:

1. The cabinet should be powered ON and the game running. Open the CD drive and insert the CD labeled **Six Gun Select - Joshua Operating System/Game Software CD**. Power the cabinet OFF then ON. When the computer reboots, the CD should automatically start up.
2. At the Install Menu, use the Operator Up/ Down and Select buttons to choose one of the following options:
 - **(1) Install and Format**. Use this option when upgrading the software. It will erase all previous game and coin collection information on the computer and start over. You will need to re-install any other games after this step.
 - **(2) ADD / Update Games** – use this option to install the new games on the cabinet without erasing any of the games that are currently installed or coin collection info. Once the new game is installed it will automatically become available in the game selection menu in the game attract mode.



3. When the hard-drive imaging process is complete, the game software will automatically start. Remove the CD from the computer and keep in a safe place.
4. When the game starts up for the first time, it is important to synchronize the new game software with the cabinet's hardware. This is done by coining up the machine (insert 2 credits), then verifying that the two credits are shown (for example, \$0.50) on the monitor. Finally, power the system OFF and then ON to complete the synchronization process.

In the event the software running on the computer becomes corrupt, or you run into software problems, you can use the CD to reinstall the software.

Return Items after Joshua OS Upgrade Kit Installation

For your convenience we have enclosed a prepaid self-addressed envelope with the Joshua OS Upgrade kit. Please use this envelope to return the old hardware listed below.

If you ordered the Joshua OS Upgrade kit you will need to return the old hardware that was installed on your LBH computer to Global VR. Please include all items from the list below to receive a full credit towards your account. Global VR will deduct the retail value for any hardware item that is not included in your return from your account.

- (1) Nvidia Geforce 2 Video Card
- (1) USB I/O Card
- (1) LBH KQRTG USB Game Dongle

Note: You have been invoiced for these parts. In order to receive full credit towards your account you must return these items to GLOBAL VR within 30 days of receipt of this kit.

Please fill out the bottom section of this sheet and send it back with the parts to Global VR.

Name:	
Company Name:	
Street Address:	
City, State, Zip:	
Phone Number:	()
Distributor:	
Serial Number on Game:	

Serial Number is located on the upper back left corner of the cabinet

Thank You