

# EA SPORTS™ PGA TOUR® Golf Team Challenge Upgrade Instructions

---

Document Part #: 040-0126-01

This document describes how to upgrade your EA SPORTS™ PGA TOUR® Golf **Challenge Edition** cabinets to the new **Team Challenge** version. These instructions apply to dedicated, upgrade, or conversion cabinets with a Players' SmartCard Reader installed.

**Tools required:** Screwdriver with Torx® security bits for replacing artwork.

## Check BIOS and Power Plate Wiring

To ensure optimal performance from your cabinet, check the BIOS (CMOS) settings and the power plate wiring.

- *Service Bulletin SB-010*, included in the kit, describes how to check power plate wiring to make sure connections are not inverted and the ground is secure. (A secure ground is very important for proper operation.)
- The document titled *Checking BIOS (CMOS) Settings for Golf Computers*, included in the kit, describes how to check and set your BIOS (CMOS). Refer to the appropriate section for the motherboard in your system computer.

## Unregister Cabinet

### Important:

**Failing to unregister before upgrading the software may cause serious problems!  
(Most cabinets have already been automatically unregistered.)**

1. With the cabinet powered ON and the game running in Attract Mode, press the operator button to launch the Operator Menu.
2. From the Registration Options screen, select **Unregister Cabinet**. (If you do not see the Unregister Cabinet button, the cabinet is already unregistered, and you can proceed to the next step.) The cabinet will call in to unregister. Wait for the call to complete.
3. From the Operator Menu, write down any cabinet settings that you wish to restore after software installation. For your convenience, the kit includes a double-sided Cabinet Settings Worksheet where you can write down settings for both **Challenge Edition** and **Team Challenge**.

## Replace Dongle and Install the Software

Follow these instructions to upgrade the software on your cabinet. Software installation for this upgrade requires the **System Recovery Disk** and three (3) **Game Install Disks** shown below.



Figure 1. Parallel Game Dongle and Software CDs

Please be aware that installation will erase all cabinet settings and statistics, including Tournament data.

**Total installation time is about 35 minutes.**

1. Open the CD drive and insert the CD labeled **System Recovery Disk**. Power OFF the computer.
2. Remove the game dongle from the parallel port of the computer and install the new game dongle from the kit.
3. When the computer powers on, the CD will automatically run and begin the installation process. After about 30 seconds, you will see screens indicating that the installation is in progress.
4. When prompted, remove the CD and power cycle the cabinet. **DO NOT** put the game CD in the drive yet. After the reboot, the software will finalize the installation and then the system will automatically reboot again.
5. After the second reboot, the software will run a few more processes, and then you will briefly see a prompt to insert the game disk, followed by a large GLOBAL VR<sup>®</sup> logo with the Windows Start menu and taskbar. Insert the disk labeled **Game Install Disk 1 of 3**. The disk will run automatically and you will see a progress bar onscreen.
6. When prompted, remove the CD and insert **Game Install Disk 2 of 3**. The CD will run automatically.
7. When prompted, remove the CD and insert **Game Install Disk 3 of 3**. The CD will run automatically.
8. When Disk 3 finishes, the computer will reboot and you will see a screen saying that there is a disk in the drive. Remove the CD from the drive.
9. If the cabinet is located in the USA or Canada, the **Instant Online** screen will appear. Proceed to the next section to register the cabinet.

# Register Your Cabinet

## Instant Online (US and Canada Only)

1. When you boot your game for the first time after installing the software, the screen shown below on the left will appear. The **Connect Now** button will be highlighted. Press the **START** button on the control panel to start the registration process.



2. The screen shown above on the right will appear next. Read the screen and then open the coin door and press the Operator button. Continue with the Registration Process described below.

**Note:** If you prefer to register later, you can press the **FLY OVER** button to cancel, and then start again at any time by selecting **Actions** under **Register/Connect** in the Operator menu.

## Registration Process for All Cabinets

1. When you continue from step 2 above, *or* select **Actions** under **Register/Connect** in the Operator menu, and then select **Register Cabinet**, one of the following screens will appear.



2. Use the trackball to select the registration method you wish to use, and then press the **START** button. Refer to Table 1 on the next page for more information.

**Hint:** For new locations, register through the website and get a 4-digit Cabinet Registration Key so you don't have to input location information with the trackball.

Table 1. Registration Methods

<p><b>I have my Activated Operator Card.</b></p>	<p>If you have your Activated Operator Card, insert it in the card reader. The software will read your card and then prompt you to remove it. Continue with <i>Configure your Connection</i> on page 5.</p>
<p><b>I have a 4-Digit Cabinet Registration Key for this game.</b></p>	<p>If you have a 4-digit Cabinet Registration Key from the GLOBAL VR website or Tournament Support, proceed with the steps below.</p>
<p><b>Help me get a 4-Digit Cabinet Registration Key.</b></p>	<p>Click this button for instructions on getting a 4-digit Cabinet Registration Key.</p>
<p><b>Express Registration (Available in USA and Canada Only)</b></p>	<p>If you cannot register by one of the other methods, you can still get online today. Follow the steps on page 7.</p>

### Enter your 4-Digit Cabinet Registration Key

1. When you select the 4-Digit Cabinet Registration Key option and press the **START** button, the screen shown below will appear.

**Note:** Registration keys can be used only on one cabinet and expire in a week.

2. Make sure there is a blue box around the blank field on the screen, as shown below, and then press **START** to open the number pad. Use the trackball to select each number of the Registration Key from the number pad, and press **START**. If you make a mistake, select **DELETE** and press **START** to delete the last number entered. When you finish, select **DONE** and press **START** to close the number pad. In the main window, select **DONE** and press **START** (or select **BACK** to start over).
3. Continue with *Configure your Connection* on page 5.



## Configure your Connection

1. Once you have entered your Registration Key or inserted your Operator Card, the Select Time Zone screen will appear, as shown below. Press **START**, use the trackball to scroll to your time zone, and then press **START** again.



2. The Configure Connection screen will appear next, with **Dial-Up** selected as the default, as shown below on the left. If you will be using Dial-Up to connect to GLOBAL VR, skip to step 3.

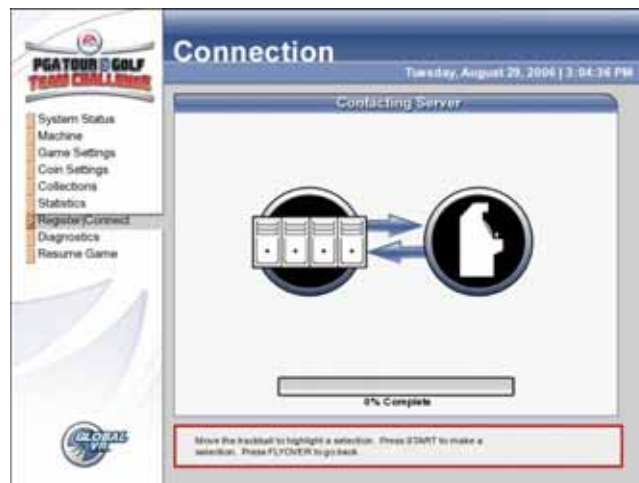
If you will be using a broadband network to connect to GLOBAL VR, press **START**, use the trackball to change the selection to **Broadband**, and press **START** again. The screen below on the right will appear.



3. If you selected **Broadband**, use the trackball to move down to **Daily Connection Time** and press **START**. Now use the trackball to select a time (within a one-hour range) for the cabinet to call in to GLOBAL VR. This should be a time when the cabinet is on, with the network connected, but not a busy time for players.
4. For **Broadband** cabinets, connect an Ethernet cable from your network to the Ethernet port on the back of the cabinet (see *Typical Game Network Setup* on page 15), and then use the trackball to highlight **NEXT** and press **START**. Skip to step 4.

3. If you selected **Dial-Up**, follow the steps below to set up dialing time and local phone numbers for access to the Internet.
  - a. Use the trackball to move down to Daily Connection Time and press **START**. Now use the trackball to select a time (within a one-hour range) for the cabinet to call in. This should be a time when the cabinet is on, with the phone line connected, but not a busy time for players.
  - b. Use the trackball to move down to **State** and press **START**. Now use the trackball to select the state where the cabinet is located, and press **START**.
  - c. Use the trackball to move down to **Primary City** and press **START**. Now use the trackball to select the city where the cabinet is located (or the nearest city), and press **START**.
 

**Note:** For larger cities, you may see a choice of different areas of the city. Select the area that best describes the cabinet location.
  - d. Use the trackball to move down to **Primary Number** and press **START**. Now use the trackball to select a local phone number from the list and press **START**.
  - e. Use the trackball to move down to **Dial Area Code** and press **START**. Set this to **Yes** if you need to dial an area code to reach the selected Primary Number, or **No** if you do not.
  - f. If you need to dial a prefix (such as 8 or 9) to dial out of the location, use the trackball to move down to **Dialing Prefix** and press **START**. Use the trackball with the number pad to select the prefix number(s) and press **START**. When finished, select **Done** and press **START**.
  - g. Use the trackball to move down to **Secondary City**, and perform the same steps as above to set up the **Secondary Number**. You can select the same city, or another city close to the cabinet—just be sure to select a different number. The cabinet will dial this number any time there is a problem with the Primary Number.
  - h. Once you finish with the Dial-Up Settings, connect a working analog phone line to the Phone port on the back of your cabinet (see *Typical Game Network Setup* on page 15), use the trackball to select **NEXT**, and press **START**.
4. When you click **NEXT** after configuring the connection, the cabinet will call in to GLOBAL VR to download your registration information. A screen similar to the one shown below will appear, with a progress bar showing the progress of the call.





5. If you used your Activated Operator Card to register, the next screen will list your cabinet locations. Select the location of the cabinet from the list and press **START**.

If you used a 4-digit Cabinet Registration Key, the Cabinet Location screen will not appear since you already entered your location on the GLOBAL VR server.

If the cabinet is in a new location, select **<New Location>** and press **START**. A series of screens will prompt you to enter the location information. (**Hint:** For new locations, it is easier to register through the website and get a 4-digit Cabinet Registration Key.)

Once you select your location, a screen will appear to confirm that registration is complete. If any errors occurred that interfered with the process, you will see an error screen advising you what to do next.



6. Once the cabinet is registered, the System Status screen that appears first when you open the Operator Menu, will show **Cabinet Status: Registered**.

### Express Registration – Get Online Today

If you don't have an account with GLOBAL VR (or you do, but you don't have your card and can't get a registration key) you can still get your cabinet registered and online within minutes.

1. When you select **EXPRESS REGISTRATION** from the Registration Method screen, and press the **START** button, the screen shown on the next page will appear. Use this screen to enter a phone number, with area code, where a GLOBAL VR representative can call you during business hours.
  - a. To enter a phone number, make sure there is a blue box around the blank field on the screen, as shown below, and then press **START** to open the number pad.
  - b. Use the trackball to select each digit of your phone number from the number pad, and press **START**. If you make a mistake, select **DELETE** and press **START** to delete the last number entered.
  - c. When you finish, select **DONE** and press **START** to close the number pad.
  - d. In the main window, select **NEXT** and press **START** (or select **BACK** to start over).

**Important:** Please double-check to make sure the phone number is correct.



2. The next screen asks you to select your time zone. Press **START** and then use the trackball to scroll to your time zone and press **START** again.





3. When the next screen appears, use the trackball to select the method you will use to connect the cabinet to the Internet, either a dial-up **phone line** or **broadband** network, and press **START**.



4. If you selected **Broadband** as your connection method, the next screen will ask you to connect your network. (See *Typical Game Network Setup* on page 15). Connect an Ethernet cable from your network to the Ethernet port on the back of the cabinet (if not already done) and then click **Network is Connected**. The cabinet will call in to GLOBAL VR. Skip to step 6.



5. If you selected **Phone Line**, enter your dial-up information as described below:
  - a. When the screen below on the left appears, make sure you see a blue box around the empty field and press **START** to open the number pad.
  - b. To enter the local area code, use the trackball to select each digit from the number pad, and press **START**. When finished, select **DONE** and press **START**. If you make a mistake, select **DELETE** and press **START** to delete the last character.
  - c. The next screen will display phone numbers for your area code, listed by city, as shown below on the right. Use the trackball to scroll through the list and highlight a local number, and then press **START**.



- d. Connect a working analog phone line to the Phone port on the back of the cabinet (if not already done) and then select **Phone Line is Connected** from the screen shown below, and press **START**. (See *Typical Game Network Setup* on page 15).



- e. The next screen asks if you need to dial a number, such as 8 or 9, to call out of the location. If you do, select **Yes** and press **START**. Otherwise, select **No** and press **START**.
- f. If you selected **Yes**, the screen shown below on the right will appear. Use the trackball with the number pad to enter the number(s) you need to dial to get an outside line. Press **START** to select each number. When finished select **DONE** and press **START**.



- g. Select **Next** and press **START**. The cabinet will dial in to GLOBAL VR to set up your registration.
6. As the cabinet communicates with GLOBAL VR, you will see the screen below on the left, with a progress bar indicating the progress of the call.

When the cabinet finishes communicating, the screen shown below on the right will appear. **Write down the Cabinet ID number.** You will need it later. Press **START** to continue.



7. The next screen provides information on how to complete your registration. (It also gives you another chance to write down the Cabinet ID.) Read the screen and press **START** to continue.
8. The final screen in the process reminds you to keep the cabinet connected to the phone line or broadband network. Press **START** to exit to the Attract Mode.
9. If you already have an account, or don't have access to a fax machine, call GLOBAL VR Tournament Support at 408.597.3429. To set up a new account, fax your completed Registration Form to 408.597.3439.

**Important:** Your cabinet will not be online until you complete step 9.



## Install the Artwork

### Artwork on a Dedicated CHALLENGE EDITION Cabinet

1. Remove the eight (8) Torx screws that secure the marquee artwork and clear plastic in place.
2. For the sub-marquee, remove the six (6) Torx screws that secure the marquee support brackets, artwork, and clear plastic in place.
3. Apply the PGA TOUR® GOLF decal to the front of the control panel.



## Artwork on an Upgrade Cabinet

**Note:** If you are upgrading a Conversion Cabinet, refer to the section at the bottom of this page for instructions on adjusting the artwork to fit.



1. Remove the four (4) Torx screws holding the top marquee retainer in place and remove the retainer.
2. Tilt the marquee glass forward and replace the artwork. Make sure the artwork is centered and flush with the bottom of the glass.  
**Note:** If the marquee curls when you try to install it, you may wish to use clear tape to hold it in place while you mount the glass.
3. Remove the eight (8) screws that secure the speaker/sub-marquee panel in place and replace the sub-marquee artwork.
4. Replace the top marquee retainer and speaker/sub-marquee panel.

## Adjusting Artwork for Conversion Cabinets

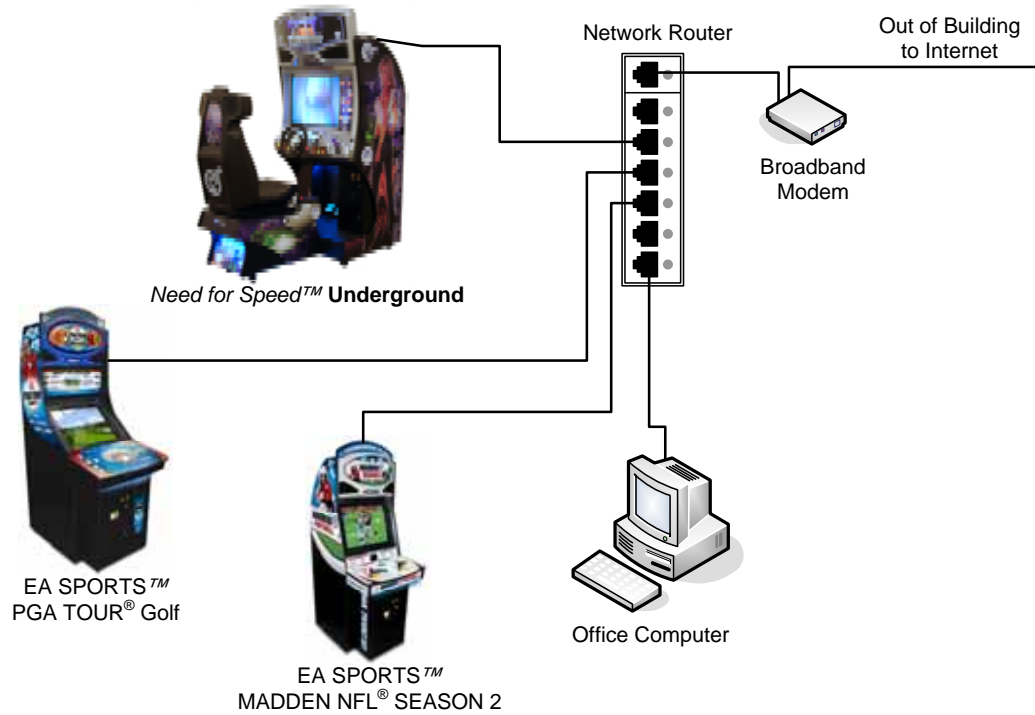
Conversion cabinet marquees and sub-marquees are slightly smaller than those on upgrade cabinets. Use the existing artwork or marquee glass as a guide to trim the Upgrade Cabinet Artwork from the kit to fit a conversion cabinet.

## Test Game Function

Now that the upgrade is finished, play a game to verify that all functions are working properly. Press the Operator button to open the Operator Menus and set up your game.

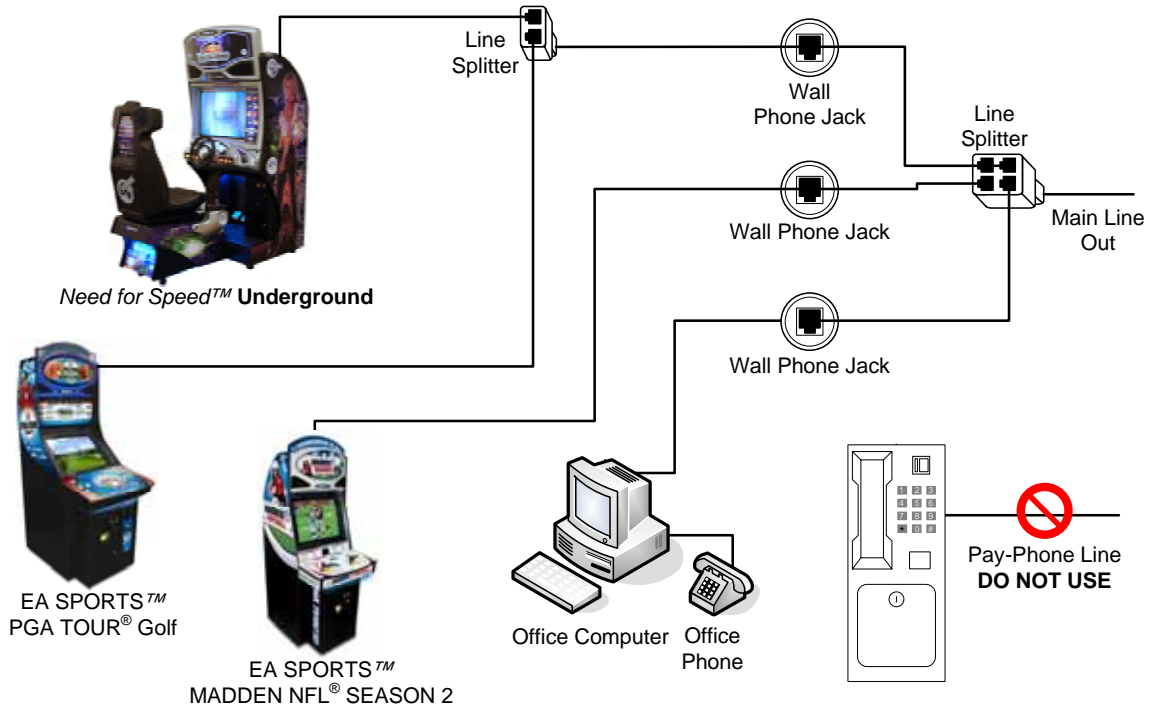


## Typical Broadband Network



## Typical Dial-Up Network

**Important:** Only one device at a time can use a standard phone line. Make sure games that share a phone line call in at different times.  
**Do not** connect a phone line to an Ethernet port or your phone system may malfunction.



**Note:** Devices can be connected to splitters in **any combination**.

Figure 2. Typical Game Network Setup