

EA SPORTS™ MADDEN NFL SEASON 2 Cabinet Upgrade Instructions

Document Part #: 040-0123-01

This kit upgrades an existing EA SPORTS™ MADDEN NFL Football cabinet with the new SEASON 2 software and artwork.

The new software supports the Players' Card Dispenser, allowing you to sell Players' SmartCards right from the game. To order the dispenser kit, contact your distributor and order part #: 90560-00.

Important: The new software requires a SmartCard Format Players' Card Reader to be installed in the cabinet. All systems should have either shipped with a card reader, or been upgraded with one. If you never received a card reader, contact your distributor.

Kit Contents

- System Restore Disk
- Game Install Disks (2 CDs)
- Marquee Assembly with Artwork and Clear Plastic
- Left and Right Side Panel Graphics
- Control Panel Overlay
- Control Deck Front Decal
- Display Shield Retainer Decal
- *All New* Game Sign
- Welcome Kit
- Cabinet Upgrade Instructions (this Document)
- Software Release Notes
- T-27 Torx™ Security Bit (for Opening Control Panel)
- Lighting Kit
- DC Power Y-Connector
- Parallel Game Dongle

Tools Required

- Screwdriver with Torx Security and Phillips Bits
- Drill
- Pencil
- Ruler or Measuring Tape

Upgrade the Software and Game Dongle

Important: When you upgrade the software, you will delete all game settings and statistics stored in the computer. Write down any information that you wish to keep. Refer to the last page of this document for a handy worksheet for writing down cabinet settings.

Software installation time is about 30 minutes.



Replace the Game Dongle and Run the System Recovery Disk

Restoring the operating system with the System Recovery Disk takes about 10-15 minutes.

1. If the cabinet is registered, do the following to unregister it before installing the software.
 - a. Make sure the cabinet is connected to a working analog phone line or broadband network.
 - b. Press the Operator button to open the Operator menus, and navigate to the Registration screen.
 - c. Select **Unregister Cabinet**, and press the **START** button. The cabinet will call in to GLOBAL VR to complete the unregister process.
2. With the cabinet running in Attract Mode, open the CD drive and insert the CD labeled **System Recovery Disk**. Power the cabinet OFF.
3. Remove the game dongle from the parallel port or USB port on the back of the computer, and replace it with the new parallel game dongle from the kit.



Parallel Game Dongle

4. Power the cabinet ON. The computer will boot from the System Recovery Disk. You will see a series of screens on the monitor.
5. After about 5 minutes, you will be prompted to remove the CD and turn the cabinet OFF and then ON. (**Do not** insert the Game Install CD yet!)
6. When the computer reboots, you may see a blank screen for 10-15 seconds, followed by a series of processing screens. After a few minutes the computer will reboot, and you will be prompted to insert Game Disk 1. Proceed to install the Game Software CDs as described below.

Run the Game Install CDs

Game software installation takes about 15-25 minutes.

1. Open the CD drive and insert the CD labeled **Game Install Disk 1 of 2**. The computer will read the CD automatically (do not reboot). You will see a series of screens.

Note: If nothing happens, make sure that you inserted the correct disk.

2. After about 10 minutes you will be prompted to insert Disk 2. Open the CD drive and insert the CD labeled **Game Install Disk 2 of 2**. The computer will read the CD automatically (do not reboot). You will see another series of screens and then the computer will reboot.
3. After the computer reboots and the game starts, remove the disk from the CD drive.
4. Press the Operator button to start the Operator Menus and set up your game.
5. Play a game to verify proper operation.

Install the Control Panel Overlay

The new control panel overlay in the kit is designed for easy application without removing the buttons or joysticks.

1. Clean the existing control panel well so the new overlay will stick properly.
2. Remove the four Torx bolts shown by the arrows in the picture below.

Caution: The control panel overlay uses very strong industrial adhesive. You **will not** be able to move it to adjust the position once it has made contact with the control panel.

3. Place the overlay over the control panel to verify placement before peeling off the backing paper.
4. Peel the backing paper from the overlay. Align the overlay with the joysticks and buttons and apply it to the surface. Press down to make sure the entire overlay makes contact with the control panel surface.
5. **Do not** replace the bolts yet, as you will need to open the control panel to install the lighting kit. It is also easier to install the Display Shield Retainer Artwork, below the monitor, with the control panel open.



Figure 1. Remove Bolts Shown Above

Install the Lighting Kit

The lighting kit adds a dramatic lighting effect to the front of the cabinet.

1. Place the light box under the control panel, centered, about 3/4" in from the front edge, with the light positioned closest to the front, as shown below. Trace around the light box with a pencil.
2. Reach up through the coin door and open the latch that holds the control panel closed.
Important: Before drilling, look inside the control panel and make sure you will not be drilling near one of the USB I/O Extreme PCBs, or any other wires or components.
3. Note where the power wires will need to pass through the bottom of the control panel, about 1-inch in from the edge of the light box, and drill a 1/2" hole for the power wires.
4. Place the light box on the cabinet with the power wires passing through the hole that you drilled, and use the five (5) screws that are partially installed in the light assembly to secure it in place.
5. Place the power inverter inside the control panel, as shown below, and connect the power wires from the light to the power inverter. Connect the DC power connector to the DC power harness in the control panel, using the Y-connector from the kit as necessary.

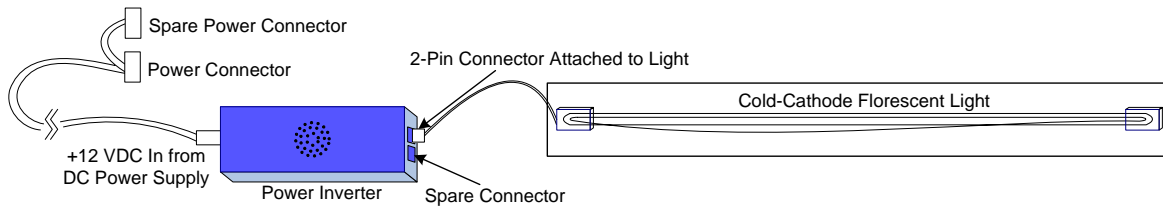


Figure 2. Cold-Cathode Light Wiring

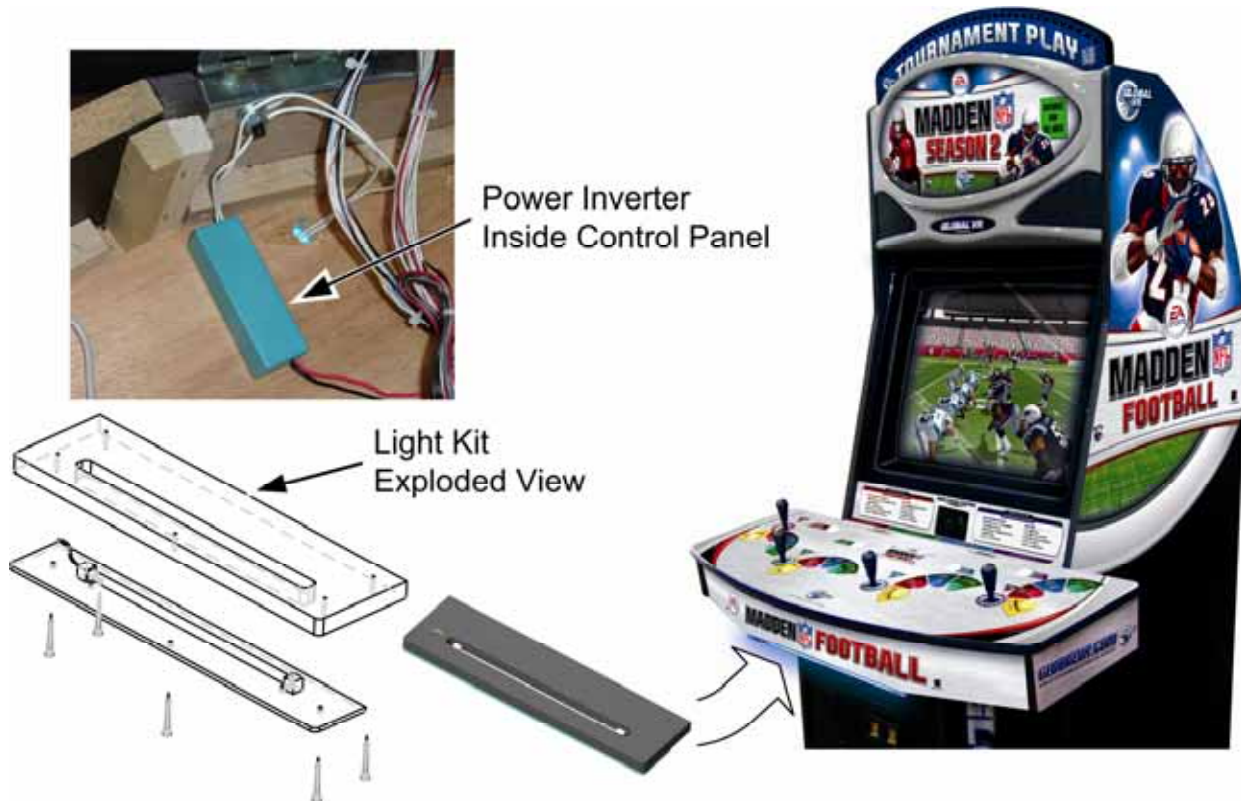


Figure 3. Lighting Kit Installation

Install the New Marquee Assembly

The upgrade kit ships with a new silver marquee with artwork and speaker grills installed. Remove the five (5) Torx screws, shown below, that hold the existing marquee in place, and replace it with the new marquee from the kit.



Note: You may keep the old marquee. (It can be used as a wall decoration.)

Install the New Artwork

The upgrade kit ships with new artwork for the Side Panels, Display Shield Retainer (below the monitor), and Control Deck Front.

1. Make sure the existing decals are in good shape. Cut away or glue down any places where a decal is pulling away from the cabinet. Clean the existing decals well so the new decals will stick.
2. Refer to the picture below and carefully apply each new decal over the existing decals.
3. After installing the artwork, close the control panel, replace the four bolts, and secure the latch under the control panel.



Install the Game Sign

The *All New* Game Sign is located in your Welcome Kit. It can be placed on either side of the cabinet, as shown below.

1. Determine the best position for the sign, and then fold the edge of the sign along the crease in the appropriate direction.
2. Peel the protective backing from one side of the strip of double-sided tape and place it on the edge of the sign.
3. Use the tape to adhere the sign to the cabinet as shown below.

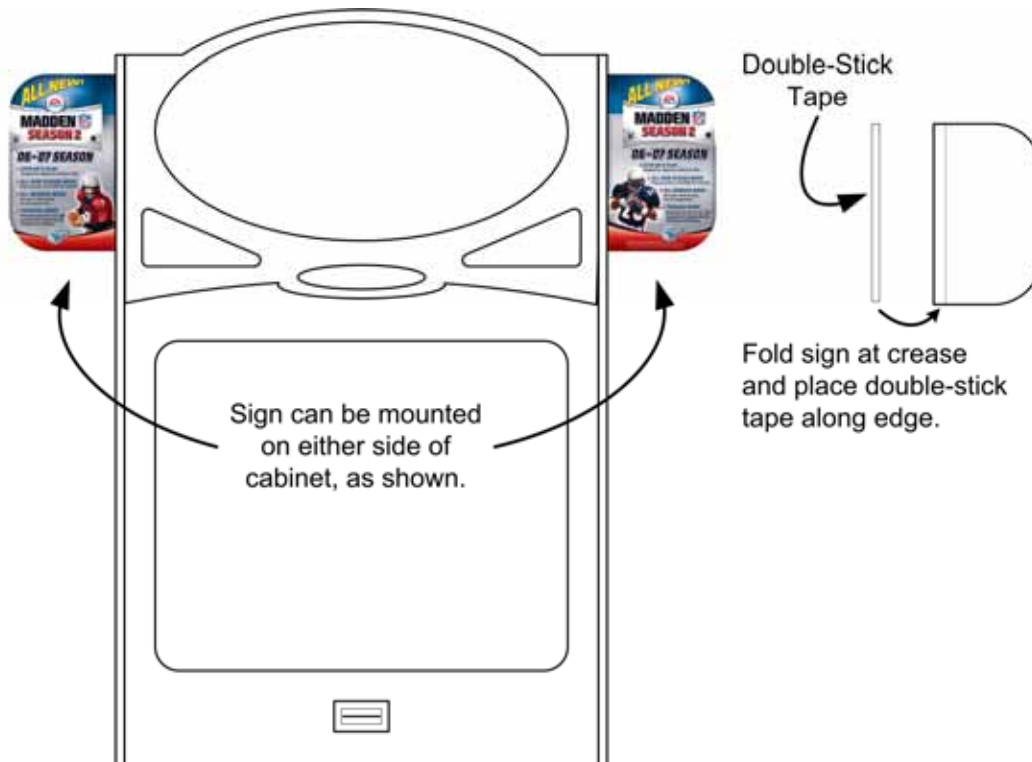


Figure 4. All New Game Sign Installation

Register your Cabinet

See the document titled *System Manual Excerpt: Chapter 4 — Setting Up Tournament Play*, located in your Welcome Kit. Follow these instructions to put your cabinet online and take advantage of all online features.

MADDEN ONLINE FEATURES ARE FREE!

Note: If you have purchased a Players' Card Dispenser Kit, refer to the instructions included with the kit to install it.

EA SPORTS™ MADDEN NFL SEASON 2 Cabinet Settings Worksheet

Write your cabinet settings on this sheet for easy reference.
 Print more copies from <http://service.globalvr.com>

Cabinet Serial Number: _____

| Operator Menu Screen | Item | Setting |
|-----------------------|--------------------------------|--------------------------------|
| Game Settings | Credits / Free play | <i>Free play</i> <i>Credit</i> |
| | Attract Credit Display | <i>Money</i> <i>Credits</i> |
| | Coin Audit Credit Display | <i>OFF</i> <i>ON</i> |
| | Credits per Money | |
| | Credits per Exhibition Quarter | |
| | Credits per Training Game | |
| | Credits per Tournament Game | |
| | Credits per Career Game | |
| | Credits per Competition Player | |
| | Credits per Smart Card | |
| | 1 Player Quarter Length | |
| | 2 Player Quarter Length | |
| | 3 Player Quarter Length | |
| | 4 Player Quarter Length | |
| Audio Settings | Master Volume | |
| | Attract Volume | |
| | Game Volume | |
| Registration | Cabinet ID | |
| | Serial # | |
| | Version | |

Notes: