

Smart Card Reader ESD-Protection Retrofit Instructions

Document Part #: 040-0061-01

If the Smartcard reader on your EA SPORTS™ MADDEN NFL™ FOOTBALL cabinet stops working, and you have to reboot to start it again, your location is probably generating excessive electrostatic discharge (ESD). The Smartcard Reader ESD-Protection Retrofit kit will upgrade your Smartcard reader with ESD-protective blocks. The kit includes the following components:

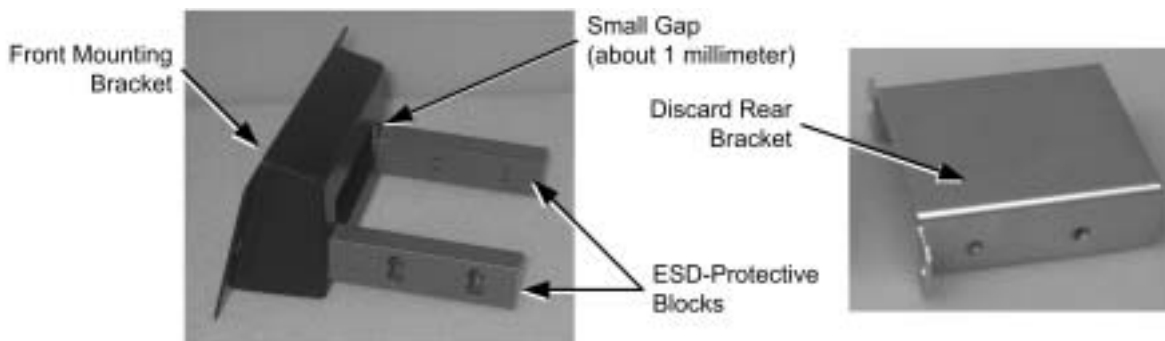
Description	Part #	Description	Part #
Two ESD-protective blocks	26066-00	Adhesive cable-tie mount	100-0022-01
M2 X .6mm Pan-head Phillips screws (four)	4600-0007	This instruction document	040-0061-01
4" cable tie	100-0023-01		

Perform the following steps to retrofit a cabinet:

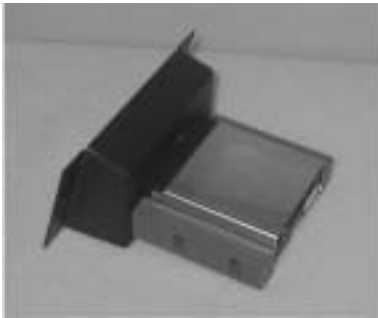
1. Turn the cabinet OFF.
2. Remove the four Torx® screws that hold the display shield retainer to the cabinet. Use caution, because the glass display shield will be loose and may slide down the front of the cabinet.



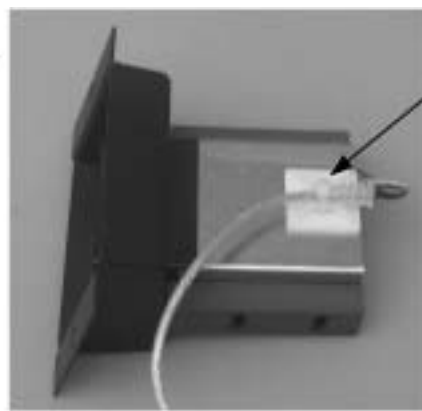
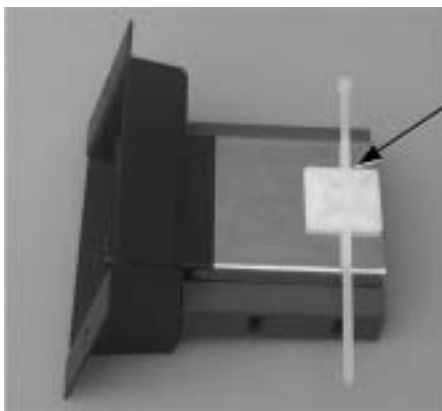
3. Remove the two Torx screws that secure the Smartcard reader to the cabinet, and carefully slide the assembly out of the cabinet.
4. The card reader cable is secured to the card reader rear bracket with a cable tie and adhesive mount. Carefully snip the cable tie, and then grip the connector to pull it from the card reader. Do not pull on the cable or you may loosen or break the small connector wires.
5. Note the orientation of the card reader in the front mounting bracket. Remove the two Kep nuts that secure the card reader to the front mounting bracket and remove the bracket from the card reader.
6. Screw the two ESD-protective blocks onto the two bolts on the front mounting bracket so that they are squared with the bracket, with the larger holes facing outward, as shown in the figure below. There may be a small gap, about 1 millimeter, between the blocks and the bracket.



7. Remove the four small Phillips screws that secure the metal rear bracket to the card reader. Discard the rear bracket, screws, and washers.
8. Place the card reader between the blocks so that it is properly oriented with the front mounting bracket and the four mounting screw holes on the sides are aligned with the holes in the blocks, as shown in the figure below.
9. Insert the four Phillips screws from the kit in the upper holes of the blocks to secure the card reader to the blocks, as shown in the figure below:



10. Peel off the backing paper and apply the adhesive cable tie mount to the top of the card reader, as shown in the figure below.
11. Reconnect the USB cable to the back of the card reader. Thread the cable tie through the mount and secure the cable just below the strain relief. This will protect the connector if the cable is caught or pulled.



12. Re-install the card reader in the cabinet with the screws removed previously.
13. Re-install the display shield retainer with the screws removed previously.
14. Turn the cabinet ON.
15. From the Operator Menu, go to the **Test Card Reader** screen and follow the instructions to verify the Smartcard reader is operating properly.

This completes the installation.