


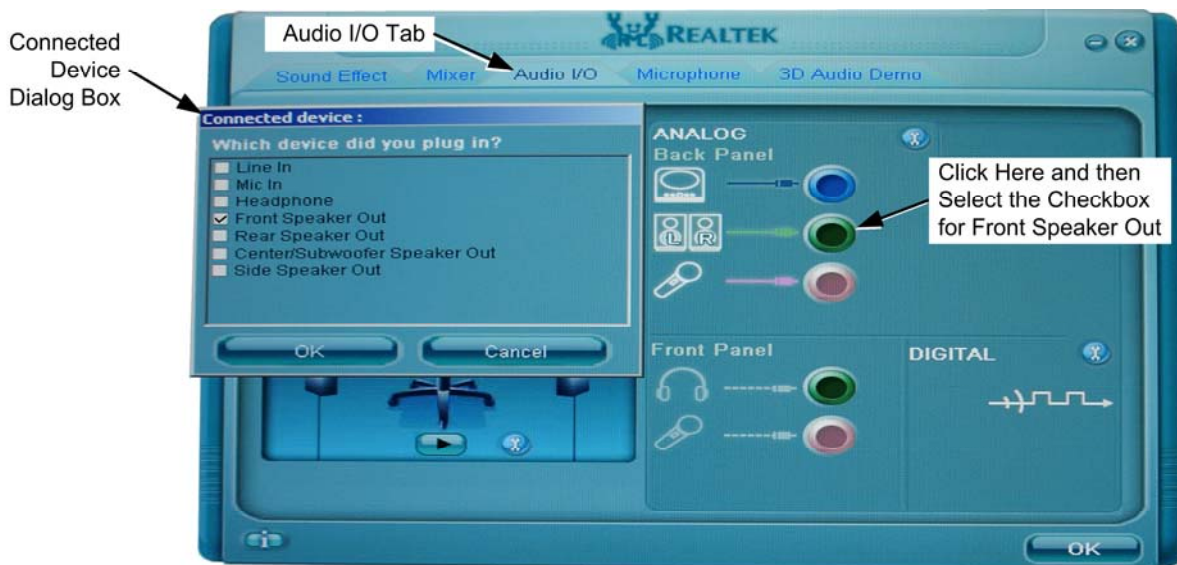


<b>Priority Level: Low — Useful Information</b>		
<b>Attention:</b>	All Service Personnel	<b>Bulletin:</b> SB-050 <b>Date:</b> 6/12/2012
<b>Products:</b>	Games with Realtek Audio Interface	
<b>Issue:</b>	Audio Plays from the wrong speakers, or some speakers do not play.	

**Symptom:** In some cases, audio may play from the speakers in the HD TV monitor, rather than the cabinet speakers; in other cases, the rear audio or another audio channel does not play.

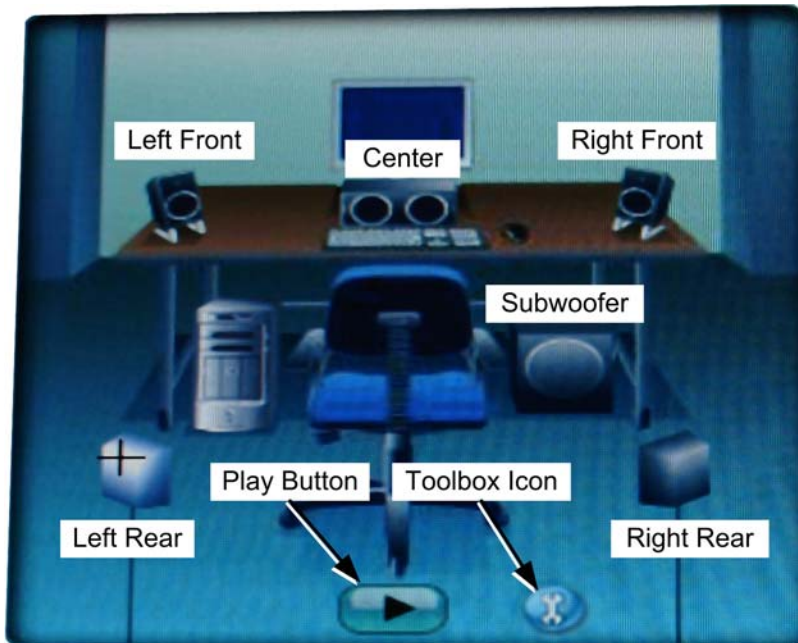
**Solution:** Follow the steps below to set up the cabinet speakers in the Realtek Audio Interface:

1. Connect a Keyboard and Mouse to the System Computer. (If using a PS/2 keyboard or mouse you will need to reboot, but this is not necessary if using USB devices.)
2. Press the Windows Flag Key  on the keyboard and select **GVR Shutdown** from the popup menu to stop the game.
3. Press the Windows Flag Key again and select **Control Panel**.
4. From the Control Panel, select **Realtek HD Sound Effect Manager**.  
The Realtek interface window will open (see the picture below).
5. Select the **Audio I/O** tab in the Realtek window. You will see a screen with a picture of the audio ports on the back panel of the computer.
6. Under **ANALOG Back Panel**, Click the LR speakers (green audio port) icon. When the **Connected device** dialog box appears, click to check the box for **Front Speaker Out** and then click **OK**.

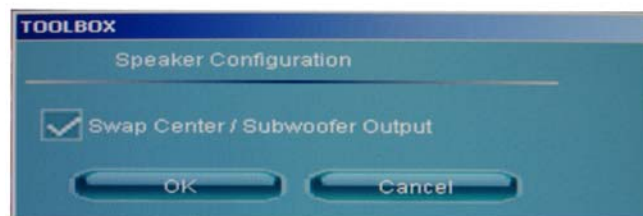


7. If your cabinet has rear speakers (in the seat), click the top item (blue audio port). When the **Connected device** dialog box appears, click to check the box for **Rear Speaker Out** and click **OK**.

8. To set the center speaker and/or subwoofer, click the third item down (red audio port). When the **Connected device** dialog box appears, click to check the box for **Center/Subwoofer Speaker Out** and click **OK**.
9. The diagram on the left side of the Realtek window allows you to test each of the speakers. Use the mouse to select a speaker and then click the **Play** button. Confirm sound comes from the correct speaker.



10. For games with surround sound, the subwoofer audio should come from the seat, and the center speaker audio should come from the center speaker in the cabinet. If these speakers are reversed (or there is no sound from the center speaker in a cabinet without a seat), click the **Toolbox icon** to open the Toolbox.
11. In the Toolbox, click to check or uncheck the box for **Swap Center/Subwoofer Output** and click **OK**. Re-check the audio output.



12. When all speakers are working properly, click **OK** to close the Realtek window.
13. Disconnect the keyboard and mouse, and reboot the game.