


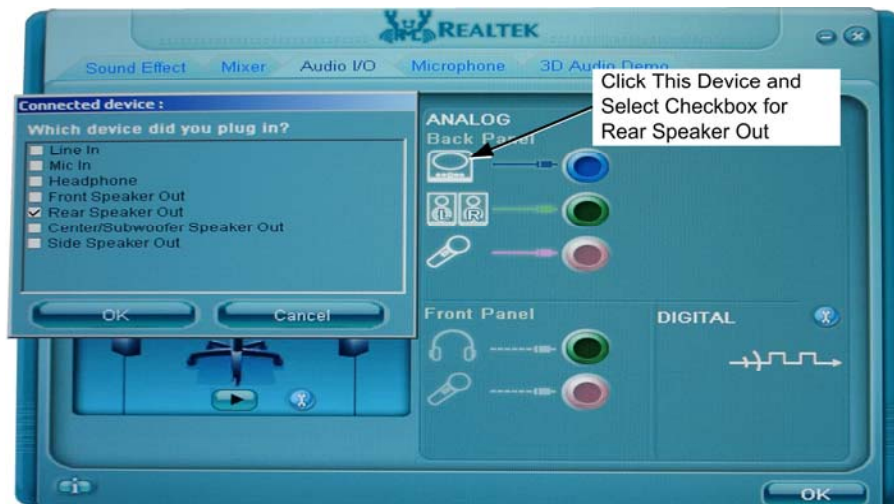


Priority Level: Low — Useful Information		
Attention:	All Service Personnel	Bulletin: SB-049 Date: 4/9/2012
Products:	All Games with DG41TX Motherboard	
Issue:	Only Front Audio Speakers Work after Software is Reinstalled	

Symptom: On Systems with the DG41TX Motherboard, after you restore software using the disks, only the front audio speakers work.

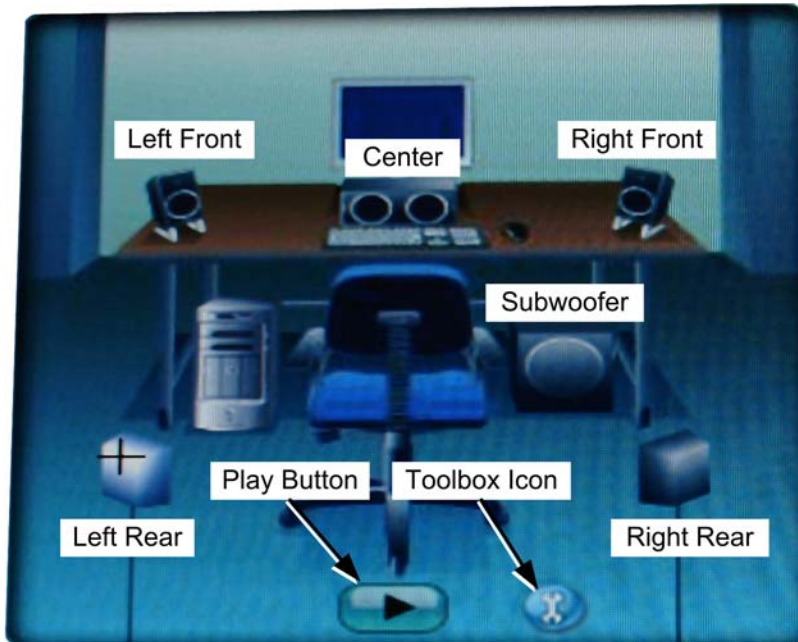
Solution: Do the following to set up the speakers in the Realtek Audio Interface:

1. Connect a Keyboard and Mouse to the System Computer. (If using PS/2 devices you will need to reboot, but this should not be necessary if using a USB keyboard and mouse.)
2. Press the Windows Flag Key  on the keyboard and select **GVR Shutdown** to stop the game.
3. Press the Windows Flag Key again and select **Control Panel**.
4. From the Control Panel, select **Realtek HD Sound Effect Manager**.
The Realtek interface window will open.
5. Select the **Audio I/O** tab in the Realtek window. You will see a screen with a picture of the audio ports on the back panel of the computer.
6. If your cabinet has rear speakers (in the seat), click the top item (blue audio port). When the **Connected device** dialog box appears, click to check the box for **Rear Speaker Out** and click **OK**.

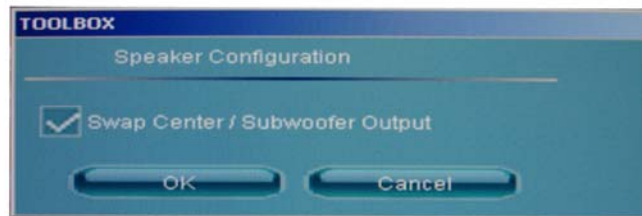


7. To set the center speaker and/or subwoofer, click the third item down (red audio port). When the **Connected device** dialog box appears, click to check the box for **Center/Subwoofer Speaker Out** and click **OK**.

- To test audio, select a speaker in the diagram on the left side of the screen and click the **Play** button. Confirm sound comes from the correct speaker.



- For games with surround sound, the subwoofer audio should come from the seat, and the center speaker audio should come from the center speaker in the cabinet. If these speakers are reversed (or there is no sound from the center speaker in a cabinet without a seat), click the **Toolbox icon** to open the Toolbox.
- In the Toolbox, click to check or uncheck the box for **Swap Center/Subwoofer Output** and click **OK**. Re-check the audio output.



- When all speakers are working properly, click **OK** to close the Realtek window.
- Disconnect the keyboard and mouse, and reboot the game.