



Priority Level: Low — Useful Information		
Attention:	All Service Personnel	Bulletin: SB-017 Date: 10/5/2005
Products:	<i>Need for Speed™</i> , EA SPORTS™ MADDEN NFL™ FOOTBALL, and many EA SPORTS™ PGA TOUR® Golf Games	
Issue:	BIOS (CMOS) Setup for Games with PS35-BL Motherboard	

The PS35-BL motherboard has horizontal audio ports located directly under the USB and Ethernet ports.

All *Need for Speed™* and EA SPORTS™ MADDEN NFL™ FOOTBALL games built through 2005 use the PS35-BL motherboard.

For EA SPORTS™ PGA TOUR® Golf Games, check the audio ports. If the golf computer has vertical audio ports, and the USB and Ethernet ports are located directly below the keyboard and mouse connectors at the top of the back panel, refer to Service Bulletin SB-018 for BIOS Setup Information.

Quick Reference Table: Key BIOS Settings

If you are comfortable using the CMOS Setup Utility, use this quick procedure. Otherwise, refer to the next page for detailed instructions.

Press the **DEL** key during boot to enter the CMOS Setup Utility. Select **Load Optimized Defaults** from the Main Menu, and then change the following settings:

Menu	Item	Setting
Standard CMOS Features	Halt On	No Errors
Advanced BIOS Features	First Boot Device	CDROM
	Second Boot Device	Hard Disk
	Third Boot Device	Disabled
Advanced Chipset Features	Memory Frequency For	DDR266
	Dram R/W Timing	Fast
Power Management Setup	PWR Loss Resume State	Turn On

When finished, press **F10** or select **Save and Exit** and press **Enter**. Select **YES** to confirm.

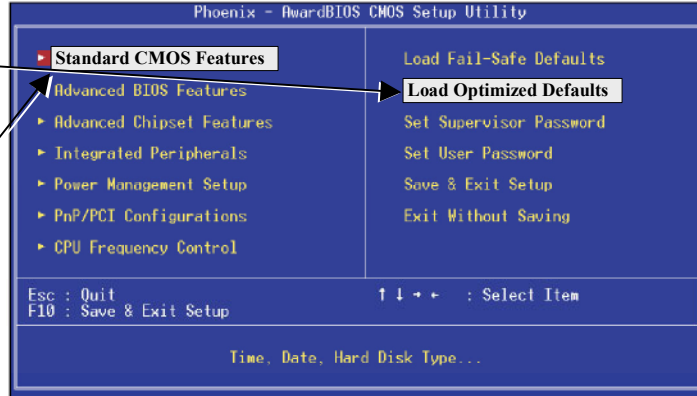
Changing the BIOS Settings: Detailed Instructions (PS35-BL Motherboard)

Important: Your screens may not look exactly like the screens in the pictures that follow, and some settings in the pictures may be different from your system. **Do not change any settings that are not specifically described in this document.**

1. Press the **DEL** key during boot. The CMOS Setup Utility Main Menu will appear:

2. Use the Arrow keys (↑↓→←) to select **Load Optimized Defaults**, and press **Enter**.

Press **Y** and **Enter** when prompted to confirm the change.



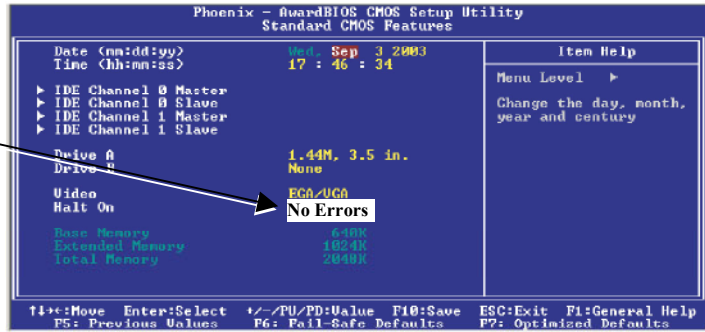
Note: Step 2 ensures that most settings are correct. The others are described in this document.

3. Use the Arrow keys to highlight **Standard CMOS Features**, and then press **Enter**.

A screen similar to the following will appear:

4. Use the Arrow keys to highlight the setting for **Halt On**.

Use the **Page Up** and **Page Down** keys to change the setting to **No Errors**. Press **ESC** to go back to the Main Menu.



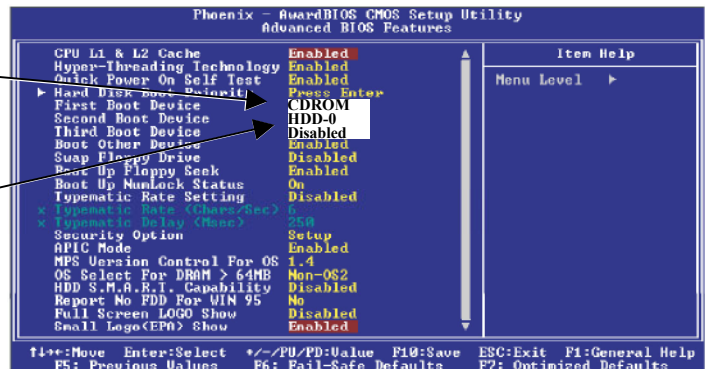
5. Now use the Arrow keys to highlight **Advanced BIOS Features** and press **Enter**. A screen similar to the following will appear:

6. Use the Arrow keys to highlight the setting for **First Boot Device**.

Use the **Page Up** and **Page Down** keys to change the setting to **CDROM**.

7. Set **Second Boot Device** to **HDD-0** and **Third Boot Device** to **Disabled** the same way.

Press **ESC** to go back to the Main Menu.



Note: If a floppy drive is installed, set **First Boot Device** to **Floppy**, **Second Boot Device** to **CDROM**, and **Third Boot Device** to **HDD-0**.

Checking BIOS (CMOS) Settings for Golf Computers

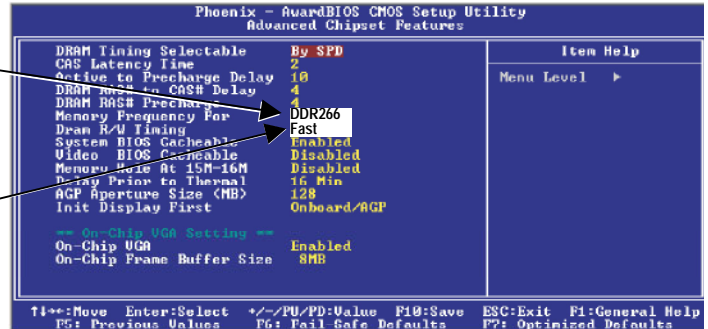
8. Now use the Arrow keys to highlight **Advanced Chipset Features** and press **Enter**. A screen similar to the following will appear:

9. Use the Arrow keys to highlight the setting for **Memory Frequency For**.

Use the **Page Up** and **Page Down** keys to change the setting to **DDR266**.

10. Use the Arrow keys to highlight the setting for **Dram R/W Timing** (if listed).

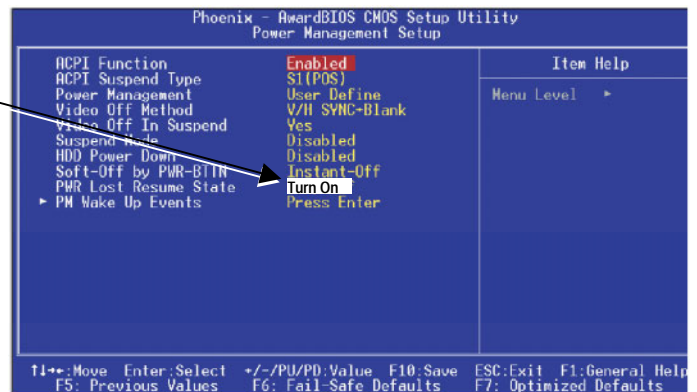
Use the **Page Up** and **Page Down** keys to change the setting to **Fast**.



11. Now use the Arrow keys to highlight **Power Management Setup** and press **Enter**. A screen similar to the following will appear:

12. Use the Arrow keys to highlight the setting for **PWR Loss Resume State**.

Use the **Page Up** and **Page Down** keys to change the setting to **Turn On**.



13. Now that all settings are correct, press **F10**. The following prompt will appear:

Save to CMOS and EXIT (Y/N) Y

14. Make sure "Y" shows at the end of the prompt (if "N" shows, the settings will not be saved), and press **Enter** to save the settings and exit.