

Setting the Computer BIOS (CMOS)

This procedure applies to the Asus **P5N-MX** Motherboard. If your system has a different motherboard, check <http://service.globalvr.com> for updated information.

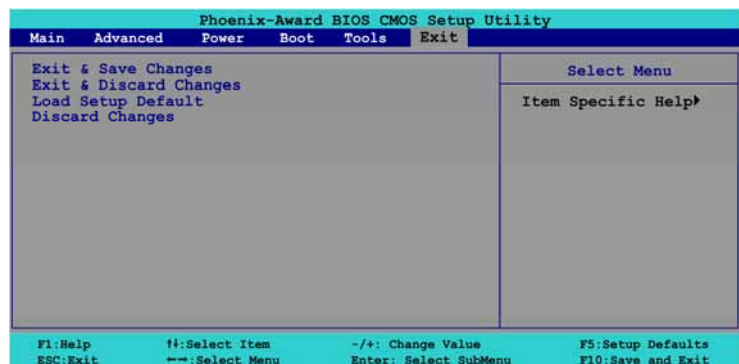
If you are comfortable using the CMOS Setup Utility, connect a keyboard to the computer and press the **DEL** key during boot to run the Utility. Select **Load Setup Default** from the **Exit** Menu first, and then check all of the settings shown in the table below. For more help, refer to the detailed instructions that follow.

Menu	Submenu (if applicable)	Item	Setting
Exit		Load Setup Default	<i>(Not applicable)</i>
Main		Legacy Diskette A:	Disabled
		Primary IDE Master	WDC WD400BB
		Primary IDE Slave	Sony DVD-ROM
Boot	Boot Device Priority	1st Boot Device	CDROM
		2nd Boot Device	Hard Disk
		3rd Boot Device	Disabled
		4th Boot Device	Disabled
	Boot Settings Configuration	Halt On	No Errors
Power	APM Configuration	Restore on AC Power Loss	Power On

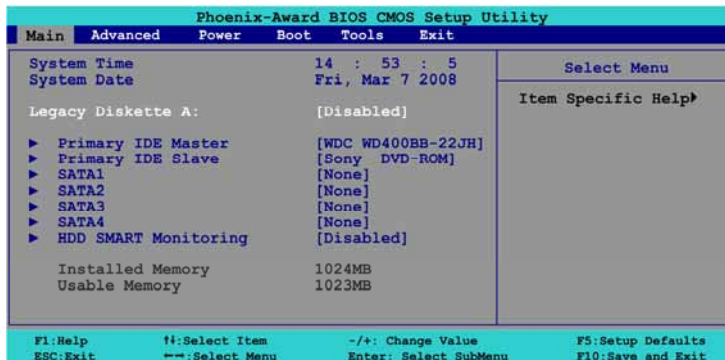
Important: Your screens may not look exactly like the screens shown in this document, and some settings shown on the screens pictures may be different from your system.

Do not change any settings that are not specifically described in this document.

1. Power off the game and connect a keyboard to the computer. Power on and press the **DEL** key during boot. The CMOS Setup Utility will start:
2. Use the Arrow keys (**← →**) to highlight **Exit** from the top of the screen, and the **Exit** menu will appear.
3. Use the Arrow keys (**↑↓**) to select **Load Setup Default**, and press **Enter**.
4. A prompt will appear saying **Load Setup Defaults (Y/N)?** Make sure **YES** is highlighted and press **Enter** to confirm the change.

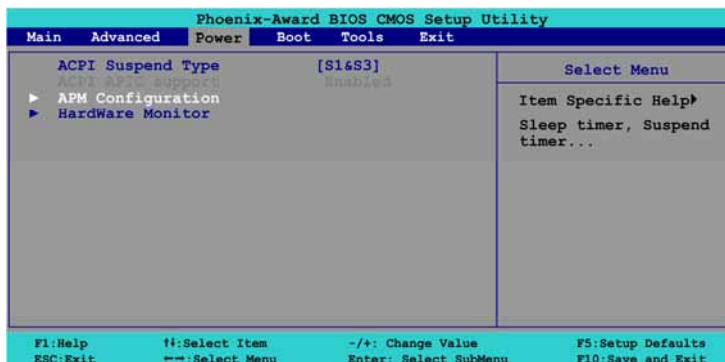


5. Use the Arrow keys (← →) to highlight **Main** from the top of the screen, and the **Main** Menu will appear.
6. Use the Arrow keys (↑↓) to highlight **Legacy Diskette A:** and then use the + and – keys to change the setting to **Disabled**.
7. Verify **Primary IDE Master** is the hard disk (WDC WD400BB) and **Primary IDE Slave** is the Sony DVD-ROM.



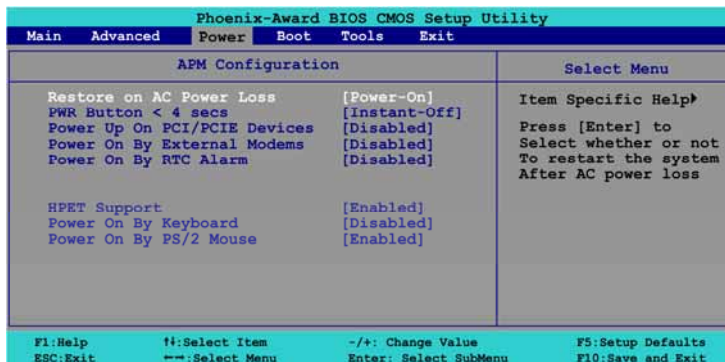
8. Use the Arrow keys (← →) to highlight **Power** from the top of the screen, and the **Power** menu will appear.
9. Use the Arrow keys to highlight **APM Configuration** and press **Enter**.

The **APM Configuration** menu will appear.



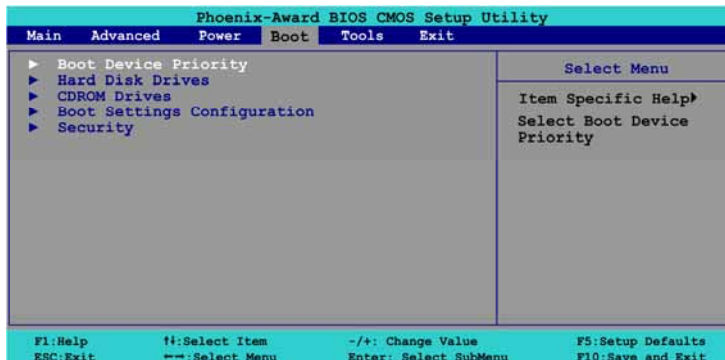
10. Use the Arrow keys (↑↓) to highlight **Restore on AC Power Loss** and then use the + and – keys to change the setting to **Power-On**.

11. Press **Esc** to return to the **Power** menu.

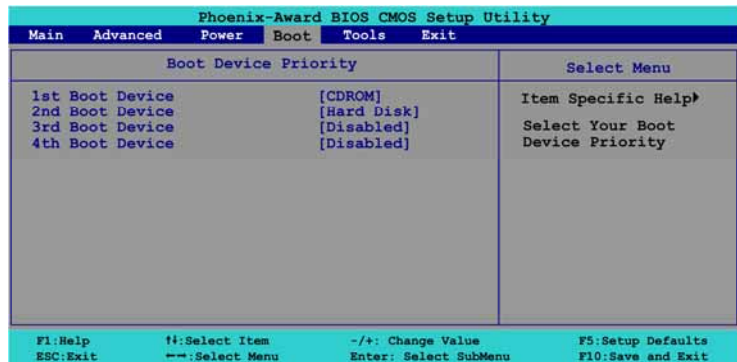


12. Use the Arrow keys (← →) to highlight **Boot** from the top of the screen, and the **Boot** menu will appear.
13. Use the Arrow keys (↑↓) to highlight **Boot Device Priority** and press **Enter**.

The **Boot Device Priority** menu will appear.

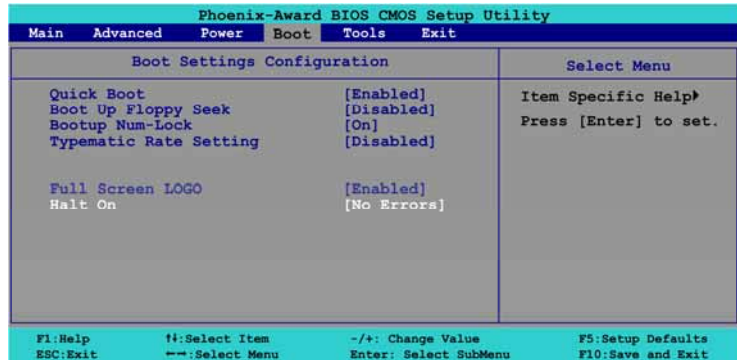


14. Use the Arrow keys (↑↓) to highlight **1st Boot Device**, and then use the + and – keys to change the setting to **CDROM**.
15. Do the same step to change **2nd Boot Device** to **Hard Disk**, and **3rd** and **4th Boot Device** to Disabled, as necessary.
16. Press **Esc** to return to the **Boot** menu.



17. Use the Arrow keys (↑↓) to highlight **Boot Settings Configuration** and press **Enter**.

The **Boot Settings Configuration** menu will appear



18. Use the Arrow keys (↑↓) to highlight **Halt On** and then use the + and – keys to change the setting to **No Errors**.
19. Press **Esc** to return to the **Boot** menu.
20. Now that all settings are correct, press F10. The following prompt will appear:

Save configuration changes and exit now?
[YES] NO

21. Make sure **YES** is highlighted (use the arrow keys ← → to select, if necessary), and press **Enter** to save the settings and reboot the computer.